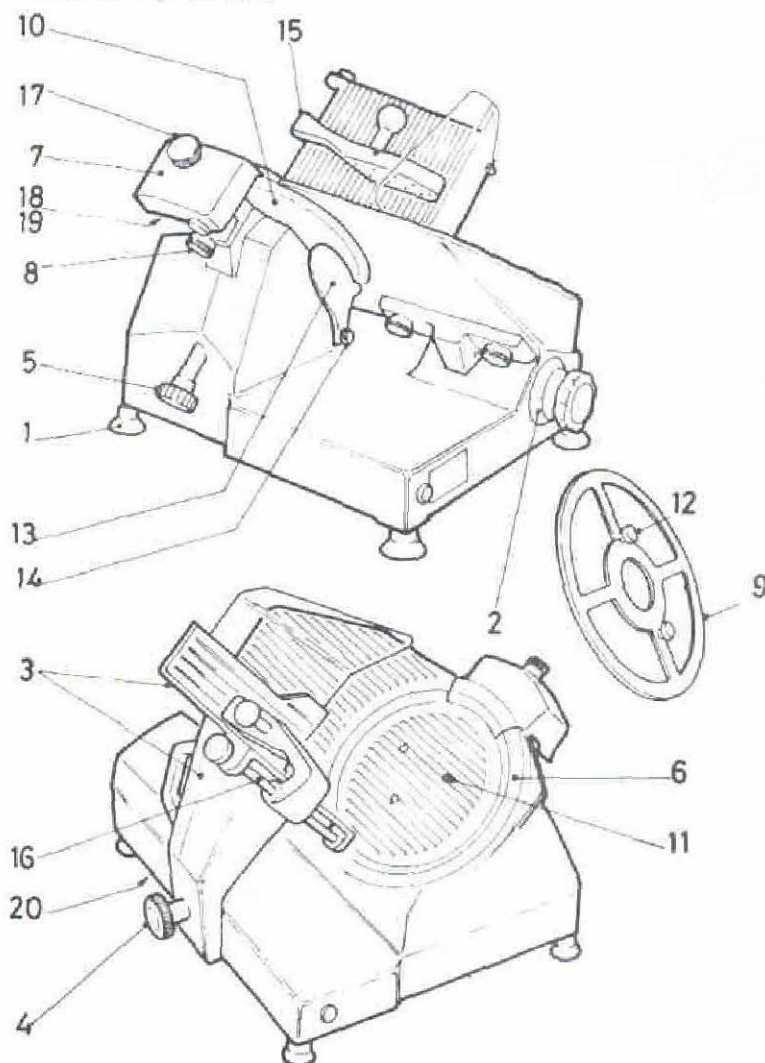


NOTICE TO EMPLOYEES

This Slicing machine is DANGEROUS, and must not be used or cleaned without permission. NEVER TRY TO OPERATE IT WHILE ANY GUARD IS REMOVED. You may not use it unless you have been thoroughly trained or are being trained under supervision. You may not clean it unless you are at least 18 years of age and have been thoroughly trained or being trained under supervision.

INSTRUCTIONS FOR CARE, OPERATION & MAINTENANCE OF S250 10" Gravity Feed SLICER



Inspection Service Contracts

Regular service is necessary on any machine if it is to be maintained in good working order. An Inspection Service Contract scheme is available to all users of CRYPTO PEERLESS MACHINES for a modest annual premium. Adoption of the scheme ensures regular maintenance and will save pounds in the years to come. We shall be pleased to send you details and any additional information which may be required on the operation of this machine. There are Crypto Peerless branches in all main centres.

INSTALLATION INSTRUCTIONS

Place the machine on a firm level surface. Any slight unevenness of surface can be compensated by the adjustable suction feet (1). Check your mains supply. The S250 is suitable only for operating on a 220 - 240V 50Hz single phase electrical supply.

Fit suitable 3 pin plug to 3 core cable. NB. The earth wire (Green/Yellow) must be connected to the earth pin of the plug.

Initial Cleaning

1. Isolate the machine from the mains supply.
2. Check that the thickness control knob (2) is set at '0'.
3. Remove hopper (3) by loosening large retaining knob (4) two full turns.
4. Unscrew completely knurled knob (5) at side of motor housing and remove knife guard (6).
5. Remove sharpening attachment (7) by loosening locating knob (8) two full turns.
6. Open the thickness control knob (2) and place blade removal attachment (9) on the blade (10) by locating the two knurled knobs (12) into the holes provided.
7. Remove the three blade retaining screws (11) and withdraw blade completely by firmly holding the two knurled knobs (12) on removal attachment. Wash thoroughly.

Do not immerse in boiling water

8. Remove deflector plate (13) by removing knurled retaining screw (14).
9. Wipe all surfaces with a warm damp soapy cloth. DO NOT USE ABRASIVES OR DRY DETERGENTS as they could cause damage to the anodised surfaces.

To re-assemble reverse the above steps.

OPERATION

Loading machine

1. Check that the thickness control knob (2) is set at '0'.
2. Pull back hopper (3) as far as possible away from blade (10).
3. Open last slice device (15).
4. Load hopper and place last slice device (15) on food to be cut.
5. Set thickness control knob (2) as required.
6. Switch on and proceed with slicing.

Note: After each operation always return thickness control knob to '0'.

Sharpening the Blade (Daily)

1. Loosen sharpening attachment (7) by unscrewing knurled locating knob (8) one full turn.
2. Turn attachment through 180°.
3. Press down so that the stones (18/19) are located on either side of the blade.
4. Re-tighten retaining knob.
5. Switch on and run machine for 2 seconds.
6. Switch off machine and return sharpening attachment (7) to the slicing machine.
7. With damp cloth remove sharpening dust. NB. Only sharpen clean blade.

Remember it is better to sharpen a little daily than a lot weekly. Ensure that honing and grinding stones are clean and rotate freely.

Maintenance

1. At the end of each day clean machine as described above. Wipe over with white vegetable oil.
2. Oil last slice runner (16) daily.
3. Oil carriage slide (20) at base of machine as required to maintain easy and free running of hopper.
4. For perfect sharpening clean sharpening and honing stones (18/19) with the wire brush provided every week.

WHEN THE MACHINE IS BEING CLEANED, ADJUSTED OR DISMANTLED IT MUST BE DISCONNECTED FROM THE ELECTRICITY SUPPLY

CRYPTO PEERLESS LIMITED

Bordesley Green Road, Bordesley Green, Birmingham B9 4UA.
Telephone: 021-773 1234 Telex: 338243.

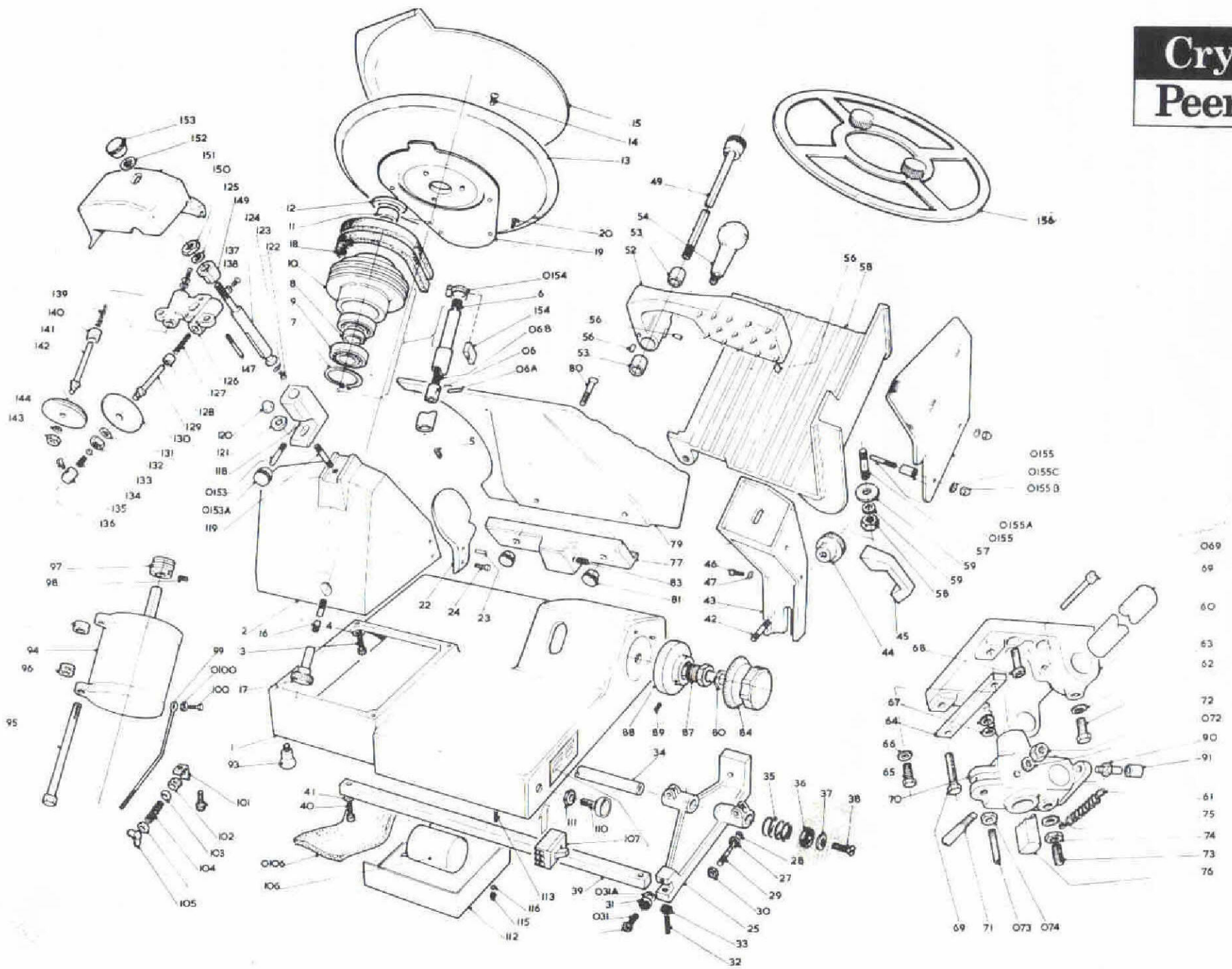
Sales and Service Branches at:

ACTON . BELFAST . BIRMINGHAM . BRISTOL . CARDIFF . COULSDON . GLASGOW
ILFORD . LEEDS . LEICESTER . LIVERPOOL . MANCHESTER . NEWCASTLE
PORTCHESTER . SHEFFIELD

Because of continual improvements strict accuracy of description and illustrations cannot be guaranteed.



Crypto Peerless



			NO.				NO.		
CP/E25/1	Base casting	1	CP/E25/54	Ballast knob	1	CP/E25/111	Warning lamp attachment plate	1	
CP/E25/2	Drive Housing	1	CP/E25/56	Hopper weight Nylon buffers	3	CP/E25/112	Electrical equipment casing	1	
CP/E25/3	Casing union screw	4	CP/E25/57	Carriage attachment stud screw	1	CP/E25/113	Casing attachment stud screw	3	
CP/E25/4	Toothed washer	4	CP/E25/58	Stud screw nut	1	CP/E25/114	Cable clamp	1	
CP/E25/5	Cutter assembly attachment stud	2	CP/E25/59	Washer	1	CP/E25/115	Casing attachment box nut	3	
CP/E25/6	Cutter support bolt	1	CP/E25/60	Slice control guide unit	1	CP/E25/116	Washer	3	
CP/E25/06	Collar	1	CP/E25/61	Feeler gauge return spring	1	CP/E25/118	Grinder support	1	
CP/E25/06A	Operating Pin	1	CP/E25/62	Spring attachment screw	1	CP/E25/119	Support attachment stud screw	1	
CP/E25/06B	Spring	1	CP/E25/63	Washer	1	CP/E25/120	Stud screw attachment box nuts	1	
CP/E25/7	Seeger washer	1	CP/E25/64	Jib	1	CP/E25/121	Stud screw washer	1	
CP/E25/8	Bearing spacer	1	CP/E25/65	Jib attachment screw	2	CP/E25/122	Central bolt locking screw	1	
CP/E25/9	Bearings	2	CP/E25/66	Washer	2	CP/E25/123	Washer	1	
CP/E25/10	Cutter support pulley	1	CP/E25/67	Slice Control attachment screw	1	CP/E25/124	Grinder central bolt	1	
CP/E25/11	Taper bushing	1	CP/E25/067	Washers	2	CP/E25/125	Central bolt washer	1	
CP/E25/12	MIM Seal	1	CP/E25/68	Slice control allen screw	2	CP/E25/126	Grinder & Honing assembly casting	1	
CP/E25/13	Cutter	1	CP/E25/69	Slice Control Shaft	1	CP/E25/127	Honing bolt spring	1	
CP/E25/14	Cutter attachment screw	3	CP/E25/069	Slice adjustment stop screw	1	CP/E25/128	Honing bolt spacer	1	
CP/E25/15	Cutter cover disc	1	CP/E25/70	Slice control moving block	1	CP/E25/129	Honing bolt	1	
CP/E25/16	Blade cover disc stay bolt	1	CP/E25/71	Crank stud	1	CP/E25/130	Honing abrasive	1	
CP/E25/17	Stay bolt attachment knob	1	CP/E25/72	Stud attachment nut	1	CP/E25/131	Honing wheel washer	1	
CP/E25/18	Vee belt	2	CP/E25/73	Jib attachment stud	1	CP/E25/132	Wheel nut	1	
CP/E25/19	Belt cover casing	1	CP/E25/073	Stud	1	CP/E25/133	Round knob	1	
CP/E25/20	Casing attachment bolts	7	CP/E25/74	Nut	1	CP/E25/134	Round spring	1	
			CP/E25/75	Washer	1	CP/E25/135	Abrasive-retaining knob	1	
CP/E25/22	Guard	1	CP/E25/76	Taper support bolt	1	CP/E25/136	Knob attachment screw	1	
CP/E25/23	Dowel Pin	1	CP/E25/77	Table support	1	CP/E25/137	Grinding bolt attachment screw	1	
CP/E25/24	Guard attachment knob	1	CP/E25/79	Adjusting Table	1	CP/E25/138	Washer	1	
CP/E25/25	Arm bushing	1	CP/E25/80	Adjustment table attachment screw	2	CP/E25/139	Grinding bolt spring	1	
CP/E25/26	Bushing	2	CP/E25/81	Box nut	2	CP/E25/140	Grinding bolt spacer	1	
CP/E25/27	Bushing bearing	2	CP/E25/83	Adjusting Table regulating stud	1	CP/E25/141	Grinding bolt	1	
CP/E25/28	Bearing washer	2	CP/E25/84	Graduated knob & Shaft	1	CP/E25/142	Grinding abrasive	1	
CP/E25/29	Bearing support bolt	2	CP/E25/86	Flexible washer	2	CP/E25/143	Grinding attachment nut	1	
CP/E25/30	Locking nut	2	CP/E25/87	Handle bolt bushing	1	CP/E25/144	Washer	1	
CP/E25/31	Frame bar bearing	1	CP/E25/88	Cams	1	CP/E25/145	Grinding bolt attachment screw	1	
CP/E25/031	Bearing attachment bolt	1	CP/E25/89	Cam attachment stud	1	CP/E25/146	Washer	1	
CP/E25/031A	Washer	1	CP/E25/90	Cam needle bolt	1	CP/E25/147	Grinder guide bolt	1	
CP/E25/32	Bushing regulating stud	1	CP/E25/91	Cam needle	1	CP/E25/148	Bolt attachment nut	1	
CP/E25/33	Stud nut	1	CP/E25/92	Index rivet	1	CP/E25/149	Grinder spacer	1	
CP/E25/34	Round guide rod	1	CP/E25/93	Rubber Feet	4	CP/E25/150	Spacer attachment nut	1	
CP/E25/35	Damper springs	2	CP/E25/94	Motor	1	CP/E25/151	Grinder cover	1	
CP/E25/36	Rubber shock absorbers	2	CP/E25/95	Motor support bolt	1	CP/E25/152	Knob washer	1	
CP/E25/37	Pressed washers	2	CP/E25/96	Motor spacer	2	CP/E25/153	Grinder cover attachment knob	1	
CP/E25/38	Round bar attachment screws	2	CP/E25/97	Motor pulley	1	CP/E25/0153	Stud	1	
CP/E25/39	Frame bar	1	CP/E25/98	Pulley attachment stud	1	CP/E25/0153A	Locking Knob	1	
CP/E25/40	Frame bar attachment screw	2	CP/E25/99	Belt tensioning bolt	1	CP/E25/154	Micro Switch assembly	1	
CP/E25/41	Toothed washers	2	CP/E25/100	Belt tensioning attachment screw	1	CP/E25/0154	Clip-Micro switch	1	
CP/E25/42	Arm attachment screw	1	CP/E25/0100	Belt tensioning lock nut	1	CP/E25/155	Plastic carriage guard	1	
CP/E25/43	Carriage arm	1	CP/E25/101	Belt tension support plate	1	CP/E25/156	Blade Removal Attachment	1	
CP/E25/44	Arm attachment wheel	1	CP/E25/102	Anti-vibration rubber washer	1				
CP/E25/45	U Handle	1	CP/E25/103	Spring washer	2				
CP/E25/46	Handle attachment screw	2	CP/E25/104	Belt tensioner spring	1				
CP/E25/47	Toothed washer	2	CP/E25/105	Belt tensioner attachment wing nut	1				
CP/E25/48	Holding carriage	1	CP/E25/106	Condensers	1				
CP/E25/49	Carriage bar & knob assembly	1	CP/E25/0106	Packing for Condensor	1				
			CP/E25/107	Switches	1				
			CP/E25/108	Switch attachment screws	2				
CP/E25/52	Hopper weight	1	CP/E25/109	Switch data plate	1				
CP/E25/53	Hopper weight Bushes	2	CP/E25/110	Warning lamp	1				

CP/E25/155/1 N.T. SAFETY GUARD