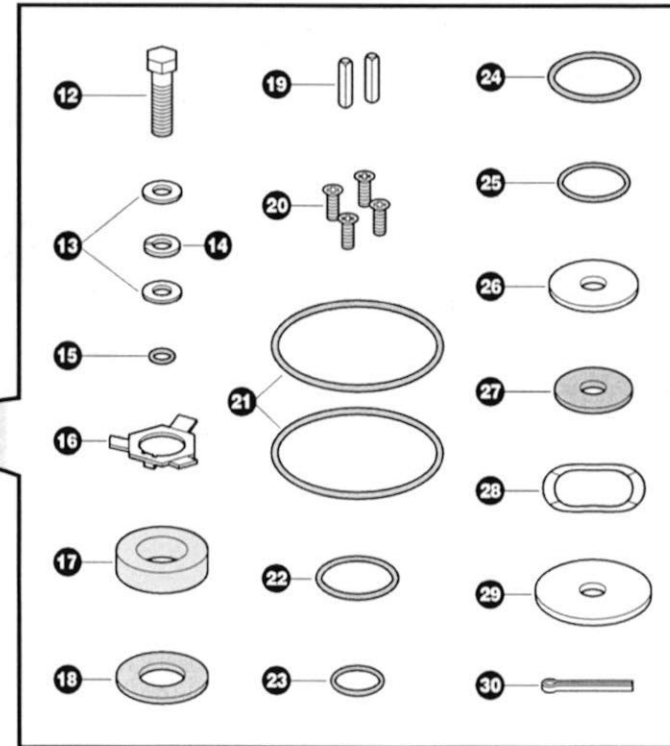
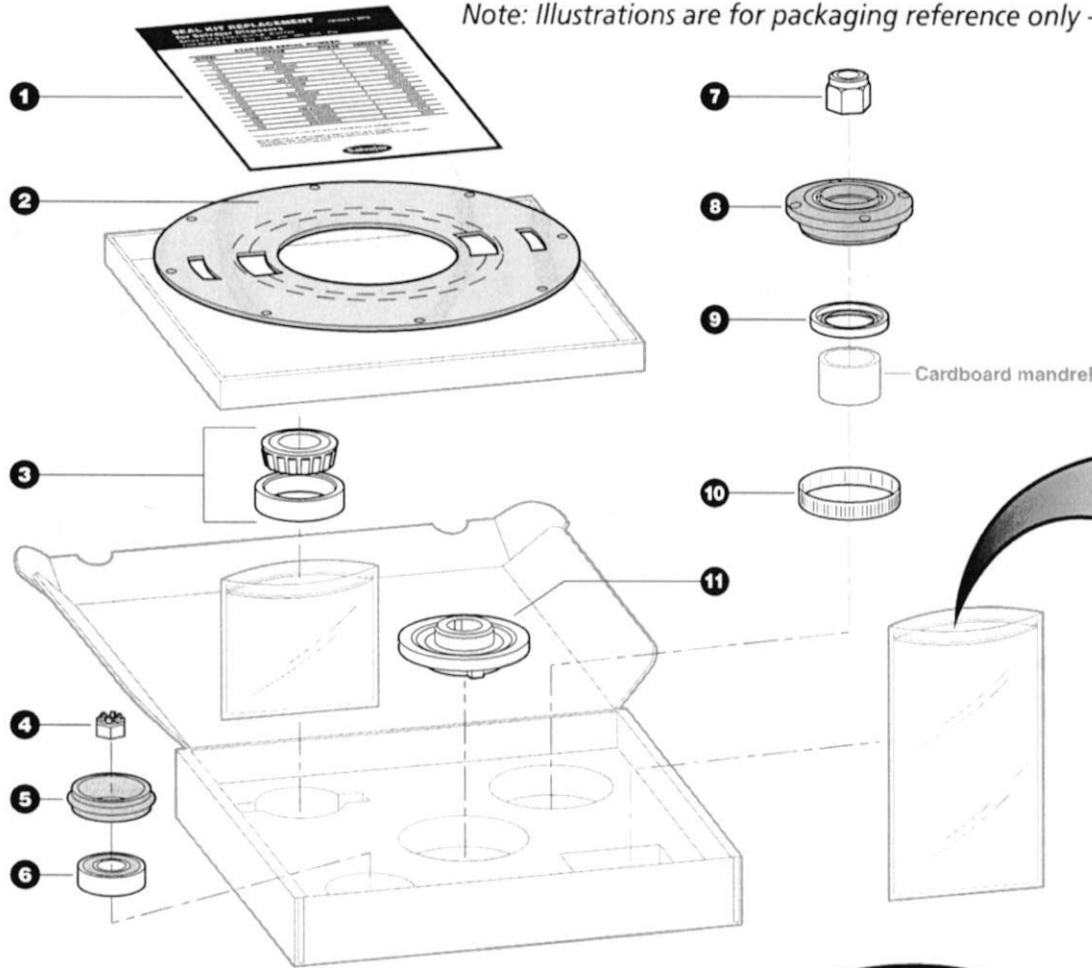


KSH123 Seal Kit Contents (for use with Disposer series G, H & J)

Note: Illustrations are for packaging reference only - refer to installation instructions for proper assembly order.



CONTENTS OF PLASTIC BAG

| ITEM # | QTY | PART # | DESCRIPTION |
|--------|-----|--------|---------------------------------|
| 12 | 1 | 38162 | ROTOR BOLT |
| 13 | 2 | 997029 | FLAT WASHER |
| 14 | 1 | 38L | LOCK WASHER |
| 15 | 1 | 11012 | O-RING |
| 16 | 1 | 997092 | LOCK WASHER |
| 17 | 1 | RSG | ROTOR SHAFT GASKET |
| 18 | 1 | 996025 | ROTOR SHAFT GASKET |
| 19 | 2 | 997070 | KEY |
| 20 | 4 | 997066 | SCREW 10-32 x 5/8 FL HD PHIL SS |
| 21 | 2 | 12151 | O-RING |
| 22 | 1 | 123 | O-RING |
| 23 | 1 | 996020 | O-RING |
| 24 | 1 | 222 | O-RING |
| 25 | 1 | 11026 | O-RING |
| 26 | 1 | 987002 | DRIVE WASHER |
| 27 | 1 | 996024 | FRICION WASHER |
| 28 | 1 | 987003 | WAVE WASHER |
| 29 | 1 | 987001 | RETAINING WASHER |
| 30 | 1 | 997051 | COTTER PIN |

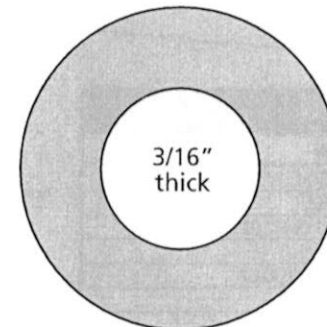
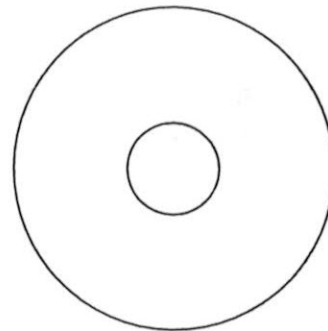
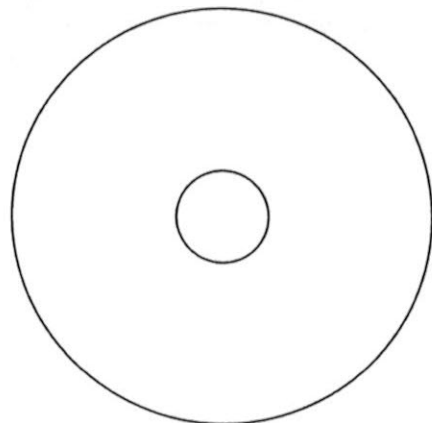
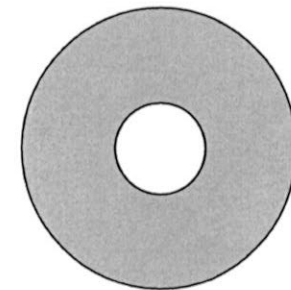
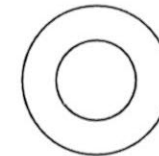
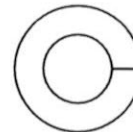
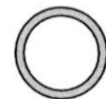
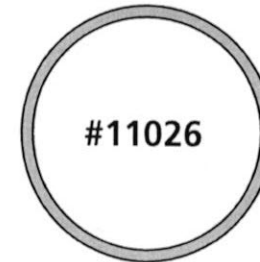
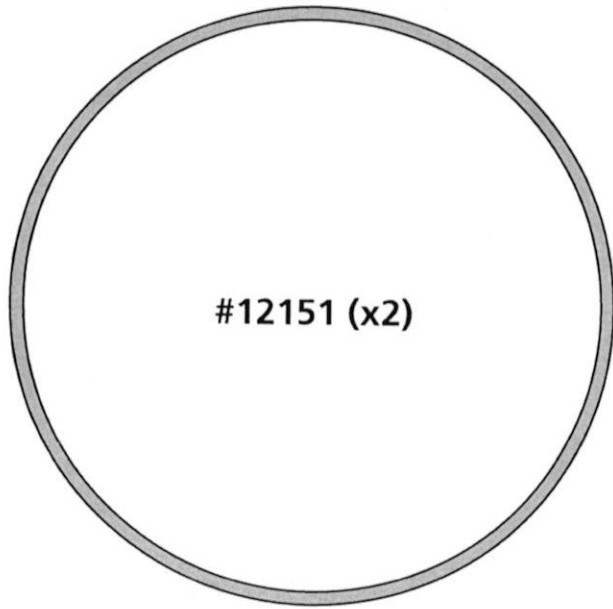
| CONTENTS | | | |
|----------|-----|-----------|------------------------------------|
| ITEM # | QTY | PART # | DESCRIPTION |
| 1 | 1 | SKR-10-BH | SEAL KIT INSTALLATION INSTRUCTIONS |
| 2 | 1 | 996045 | CENTER GASKET |
| 3 | 1 | 985001 | TOP BEARING CUP/CONE |
| 4 | 1 | 997050 | CASTLE NUT |
| 5 | 1 | 996023 | BEB RUBBER ISOLATOR |
| 6 | 1 | 6205 | BOTTOM BEARING |
| 7 | 1 | 7814RN | ROTOR NUT |
| 8 | 1 | 993001 | TOP END BELL INSERT W/SEAL |
| 9 | 1 | S67350 | RED VARILIP SEAL |
| 10 | 1 | ANL79X15S | TOLERANCE RING |
| 11 | 1 | 980132 | ROTOR BASE |



The Salvajor Company

KSH123 Seal Kit - Small Parts Identifier

(Parts are actual size)



SEAL KIT REPLACEMENT

January 1, 2011

for Salvajor Disposers

Series G,H & J Part Number: KSH123

FOR MODELS: 75 - 100 - 150 - 200 - 300 - 500 - 750

STARTING SERIAL NUMBER

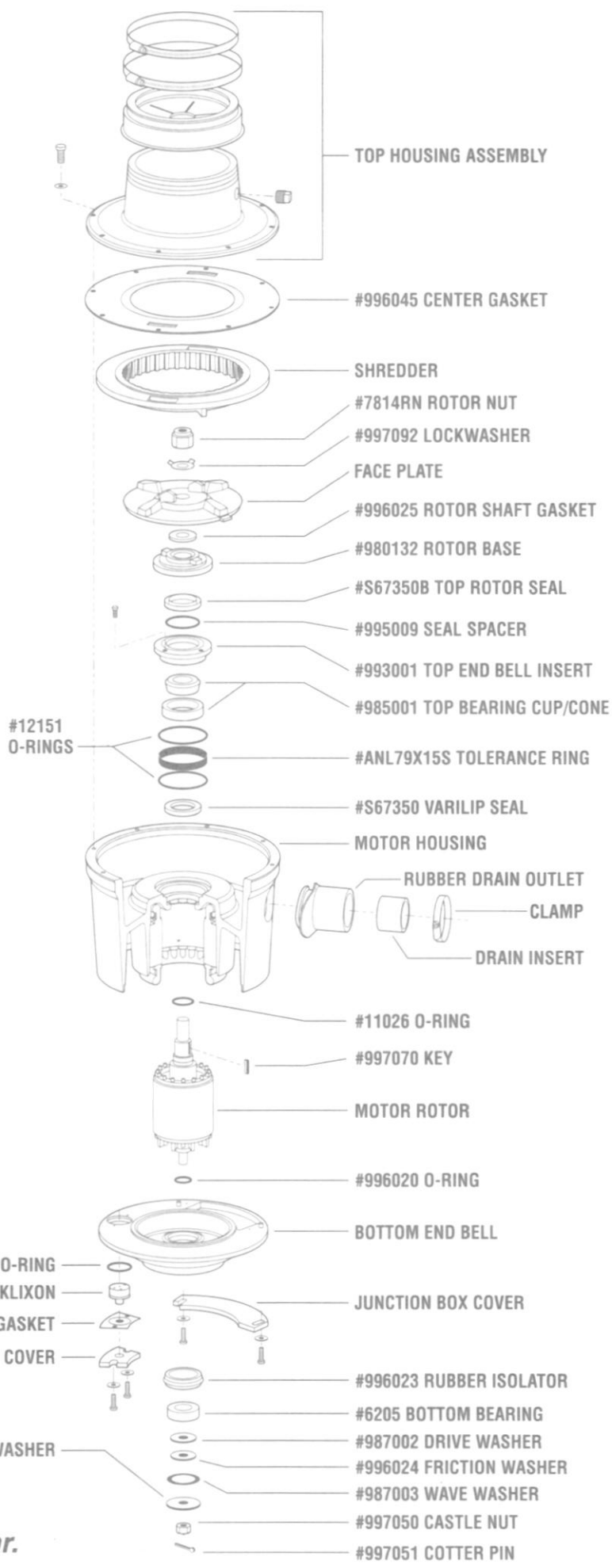
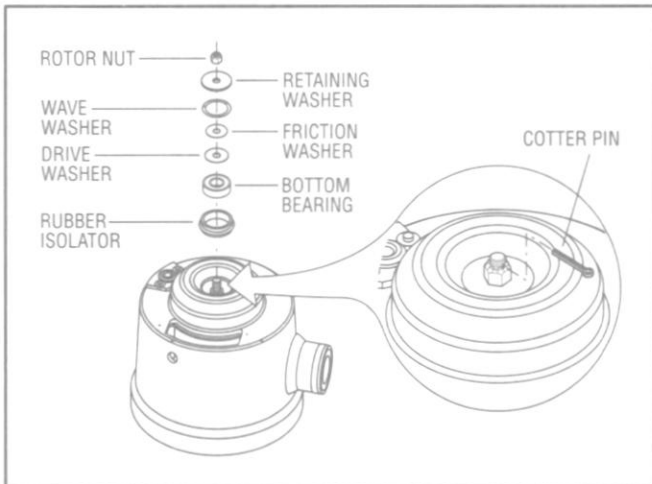
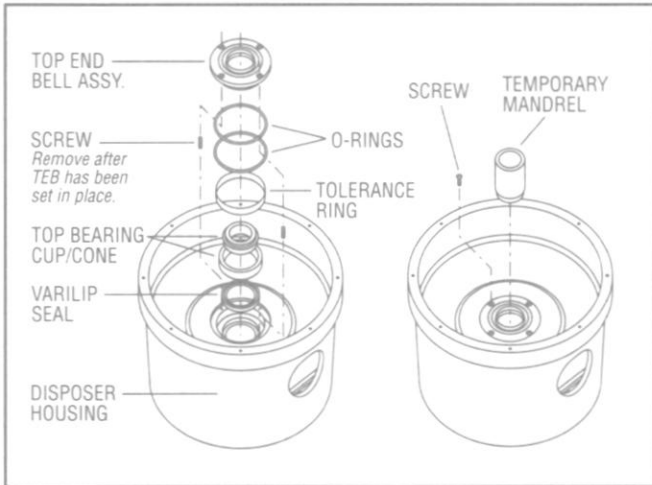
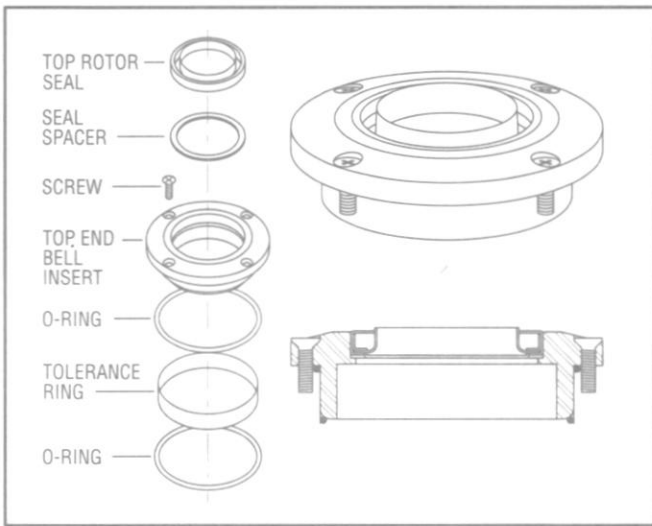
| MODEL | VOLTAGE | PHASE | SERIAL NO. |
|-------|-------------|-------|------------|
| 75 | 115/230 | 1 | 72139 |
| 75 | 208 | 1 | 71135 |
| 75 | 208-230/460 | 3 | 73142 |
| 100 | 115/230 | 1 | 9318 |
| 100 | 208 | 1 | 3709 |
| 100 | 208-230/460 | 3 | 8401 |
| 150 | 115/230 | 1 | 152115 |
| 150 | 208 | 1 | 151144 |
| 150 | 208-230/460 | 3 | 153322 |
| 200 | 115/230 | 1 | 6169 |
| 200 | 208 | 1 | 3698 |
| 200 | 208-230/460 | 3 | 16441 |
| 300 | 208-230/460 | 3 | 11850 |
| 500 | 208-230/460 | 3 | 8472 |
| 750 | 208-230/460 | 3 | 5100 |

These instructions are designed to assist in the rebuilding of Salvajor Disposers.

Not all parts in this kit will be identical matches to the parts removed.

The changes made are part of our ongoing commitment to quality, increased longevity and durability of Salvajor Disposers.





Note: Model 200 shown, others similar.

Seal Kit I

- STEP 1** With disposer housing upright, press the bottom seal (S67350) open side up, into the bottom of the bearing pocket. The upper lip of the bottom seal should be flush with the bottom of the bearing pocket.
- STEP 2** Place the tolerance ring (ANL79x15S) into the bearing pocket and push out against the outer wall.
- STEP 3** Place one o-ring (12151) into bottom of the bearing pocket and place the second o-ring around the bottom portion of the top end bell insert.
- STEP 4** Push cardboard mandrel to top of seal, do not remove. Press in the pre-greased top bearing cup\cone (985001).
- Note: The Top Bearing cup/cone should go into the insert so the cone taper (narrow side) faces down.**
- STEP 5** Carefully place top end bell insert complete with top bearing cup/cone into bearing pocket. Make sure the tolerance ring remains against the outer wall of the bearing pocket. Tighten the 4 screws.
- Note: The Top End bell Insert comes from the factory with the top rotor seal in place.**
- STEP 6** If stator and motor housing insert were removed, turn disposer housing upside down and line up motor lead outlet on the motor housing insert with the slot in the disposer housing. Insert the new stator and motor housing insert. Using a rubber mallet, seat the motor housing insert by tapping on the insert.
- STEP 7** Place the new o-rings (11026) and (996020) on the motor rotor shaft in the slots provided and insert the motor rotor shaft threaded end into the disposer housing making sure it bottoms out in the top bearing cup/cone. Once the motor rotor shaft is in place, turn the disposer upright onto a prop, such as a block of wood, under the bottom of the motor rotor shaft to assure it stays in the top bearing.
- STEP 8** Remove the cardboard mandrel from the top end bell insert. Immediately place the rotor base (980132) on the motor rotor shaft and align the key slots. Once the rotor base is in place, tap the key into the slot until it bottoms out.
- Note: New style rotor base may be smaller than the rotor base that will be taken out.**
- STEP 9** Insert the rotor shaft gasket (996025 / RSG) in the center of the rotor base around the motor rotor shaft.
- STEP 10** Place the face plate on top of the rotor base and align tabs on bottom for proper seating. Install the lock washer (997092- or 38L) and 1-1/4" rotor nut (7814RN-) or 3/8" rotor bolt with o-ring (38162/11012) on the shaft and tighten until the rotor nut, or bolt depending on series of disposer, bottoms out completely and the face plate is tight against the rotor base.
- STEP 11** Turn the disposer housing upside down, placing the faceplate on a prop, such as a block of wood. The disposer should spin free when spun by hand.

Installation

- STEP 12** Hold the bottom end bell up to the bottom of the disposer housing and pull the thermal protection switch through the hole provided in the bottom end bell. Place o-ring (123- 3/4 to 3 h.p. or 222- 5-10 h.p.) around the thermal protection switch and push the switch back into bottom end bell hole. Install switch cover and gasket securing them with 2 10-32 hex head bolts. Place the bottom end bell on the disposer housing lining up the junction box opening in the bottom end bell with the junction box in the disposer housing. After carefully pulling all the stator wires into the junction box and make sure you have not pinched any wires. Tap the bottom end bell into place with a rubber mallet.
- STEP 13** Place bottom end bell rubber insulator (996023) in bottom bearing pocket of the bottom end bell.
- STEP 14** Place bottom bearing (6205) over the motor rotor shaft into the bottom bearing pocket making sure not to crimp the bottom end bell rubber insulator.
- NOTE: Bearing must bottom out in pocket.**
- STEP 15** Place the drive washer (997002) over threads on the motor rotor shaft and against the bottom bearing.
- STEP 16** Place the friction washer (996024) over the threaded end of the motor shaft and place on to the drive washer.
- STEP 17** Place the wavy washer (987003) over the shaft and locate it on the drive washer around the outside of the friction washer.
- STEP 18** Place the retaining washer (987001) over the shaft and up against the wavy washer and the fan friction washer.
- STEP 19** Screw the 1/2" castle nut (997050) on the motor rotor shaft. This should be tightened down and then backed off and then tighten to 48" lbs with a torque wrench.
(DO NOT OVER TIGHTEN!)
- STEP 20** Push cotter pin (997051) through hole in motor shaft. Bend around castle nut to secure.
- NOTE: There should be no vertical play in the unit at this time.**
- STEP 21** With the disposer upright, check for up and down play and that unit spins freely. Insert the shredder by lining up the 4 tabs with 4 of the motor housing bolts and tap into place.
- STEP 22** Place the center gasket (996045) and tear out center of gasket so that the I.D. matches shredder. Place top housing on motor housing and secure with the 8 motor housing bolts.
- STEP 23** Check for play in the motor shaft by lifting up on the face plate and by moving it from side to side. If all checks ok then the unit is ready for service.

Salvajor Disposer Disassembly

STEP 1 Shut off power to the disposer control and remove disposer from service (see Hint #1). Remove the top housing by removing the 8 top housing bolts. Next remove the center gasket located on the top of the cutters.

Hint #1: For easier removal, the top housing can be left attached to the sink, remove the 8 bolts so that only the disposer bottom comes off. This eliminates the need to undo the plumbing to the top housing.

STEP 2 Rotate unit upside down so the junction box and thermal overload covers are facing up and remove both of these covers. Remove the black rubber gasket over the thermal overload and pull the thermal overload out of its seat by pulling on the red button. Remove the o-ring and push the thermal overload back through the hole so that it is inside the bottom of the unit.

STEP 3 Turn the unit back over and now you are looking at the cutters. The stationary cutter is the shredder and the cutter in the middle that spins is the face plate. The piece under the face plate is the rotor base. First remove the shredder by inserting a screwdriver in between the face plate and the shredder and pry it out. Next remove the 1-1/4" rotor nut (1-10 hp) or the 3/8" rotor bolt (older style 1 hp). Lift face plate off the motor shaft, remove the rotor shaft gasket and the rotor base the same way as the face plate. Next remove the four screws in the top end bell insert.

Hint #2: Rotor base might come off attached to the face plate, if so, separate these parts as the rotor shaft gasket is located between these parts.

STEP 4 Lay unit on its side, use a RUBBER mallet to strike the large threaded end (7/8-14) of the motor shaft, driving it out the bottom. The motor rotor will come off and the bottom end bell assembly will still be attached.

Hint #3: Make sure Step 2 is complete at this time so that the thermal overload wiring is not damaged.

STEP 5 Turn the unit upside down and remove the top end bell insert by pushing it out from inside the motor barrel. After the insert is out, the tolerance ring and o-rings will also need to be removed if they did not come out with the insert.

STEP 6 Using a long screwdriver, drive out the bottom seal from the motor barrel side of the unit and it will come out similar to the top end bell insert.

STEP 7 Remove the cotter pin and 1/2" castle nut from the bottom end bell assembly and remove the drive washers. Use a RUBBER mallet to separate the bottom end bell assembly and the motor rotor. Once separated, remove the bottom sealed bearing and the orange bottom end bell rubber isolator.

You are now ready to install the seal kit.

| PART NUMBER | DESCRIPTION |
|--------------------|---|
| 996045 | Center Gasket |
| 38162 | Rotor Bolt |
| 38L | Lock Washer |
| 997029 | Flat Washer |
| 11012 | O-Ring |
| 7814RN | Rotor Nut |
| 997092 | Lock Washer |
| 996025 | Rotor Shaft Gasket |
| RSG | Rotor Shaft Gasket |
| 980132 | Rotor Base |
| S67350 | Bottom Varilip Seal (Red) |
| 993001 | Top End Bell Insert Assembly with S67350B (Blue) Seal |
| 985001 | Top Bearing Cup/Cone |
| ANL79X15S | Tolerance Ring |
| 12151 | O-Ring |
| 11026 | O-Ring |
| 996020 | O-Ring |
| 123 | O-Ring |
| 222 | O-Ring |
| 996023 | BEB Rubber Isolator |
| 6205 | Bottom Bearing |
| 987002 | Drive Washer |
| 996024 | Friction Washer |
| 987003 | Wave Washer |
| 987001 | Retaining Washer |
| 997050 | Castle Nut |
| 997051 | Cotter Pin |
| 997070 | Keys |

