



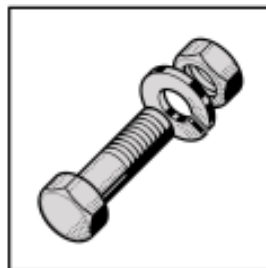
Food Preparation

# HOBART



MIXER  
V1401  
M802

**Spare Parts**  
**Pièces Détachées**  
**Ersatzteile**  
**Onderdelen**

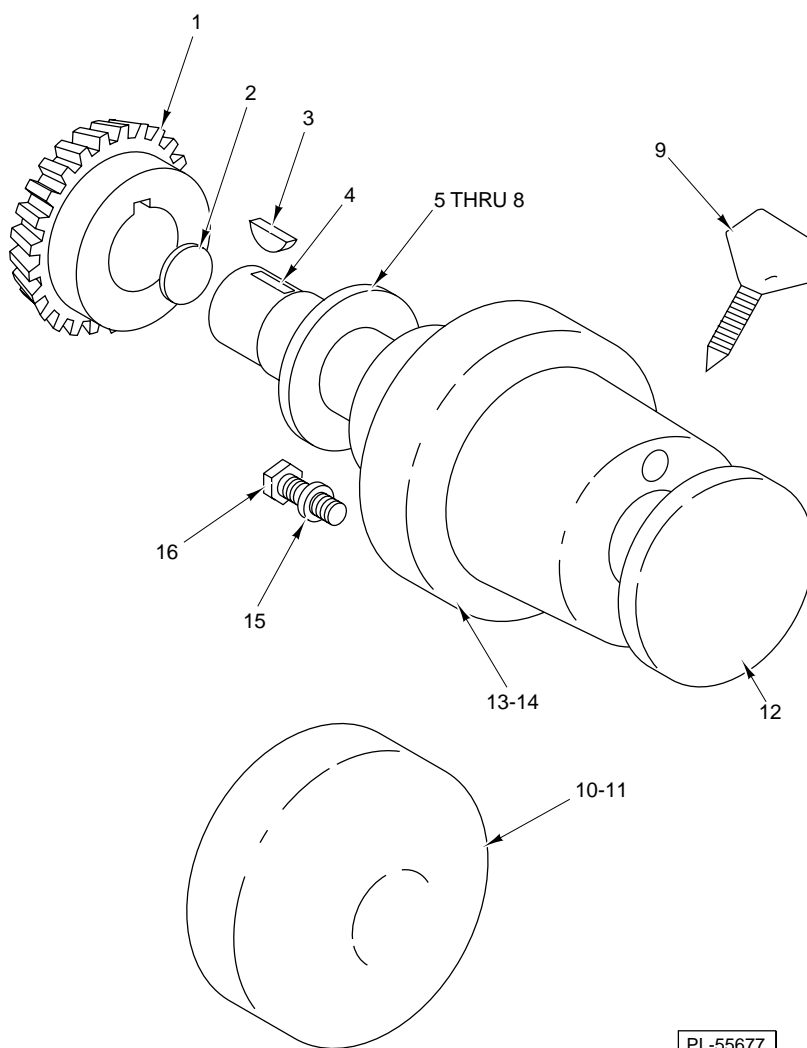


This document is the property of Hobart Manufacturing. Reproduction of this document is prohibited without the written consent of Hobart Manufacturing.

© The Hobart Mfg Co Ltd (UK)

### Table of Contents

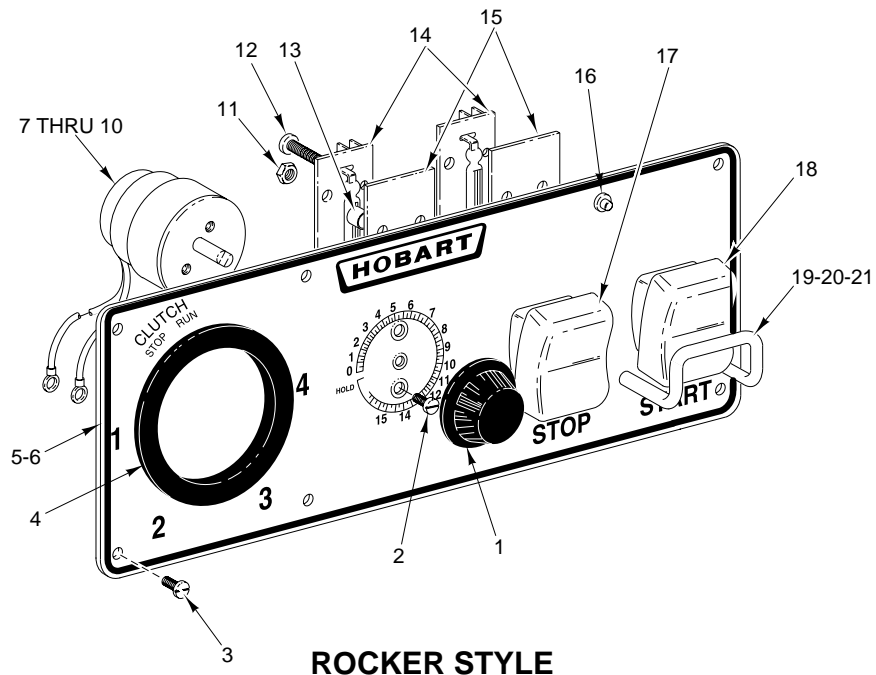
Page	Description
3	Attachment Hub Unit
5	Switch Plate and Timer Unit
7	Electrical Unit
9	Base and Pedestal Unit (M802 Series)
11	Base and Pedestal Unit (V1401 Series)
13	Shifting Unit
14	Motor Unit (M802 Series)
15	Motor Unit (V1401 Series)
17	Transmission Case Unit
19	Bowl Support Unit (M802 Series)
21	Bowl Support Unit (V1401 Series)
22	Transmission Gear Unit (M802 Series)
24	Transmission Gear Unit (V1401 Series)
26	Clutch and Brake Unit (M802 Series)
28	Clutch and Brake Unit (V1401 Series)
30	Power Bowl Lift Unit
33	Planetary Unit (M802 Series)
35	Planetary Unit (V1401 Series)
37	Bowl Guard Unit
39	Bowls and Equipment (M802 Series)
41	Bowl and Equipment (V1401 Series)
42	Agitators (M802 Series)
43	Agitators (V1401 Series)



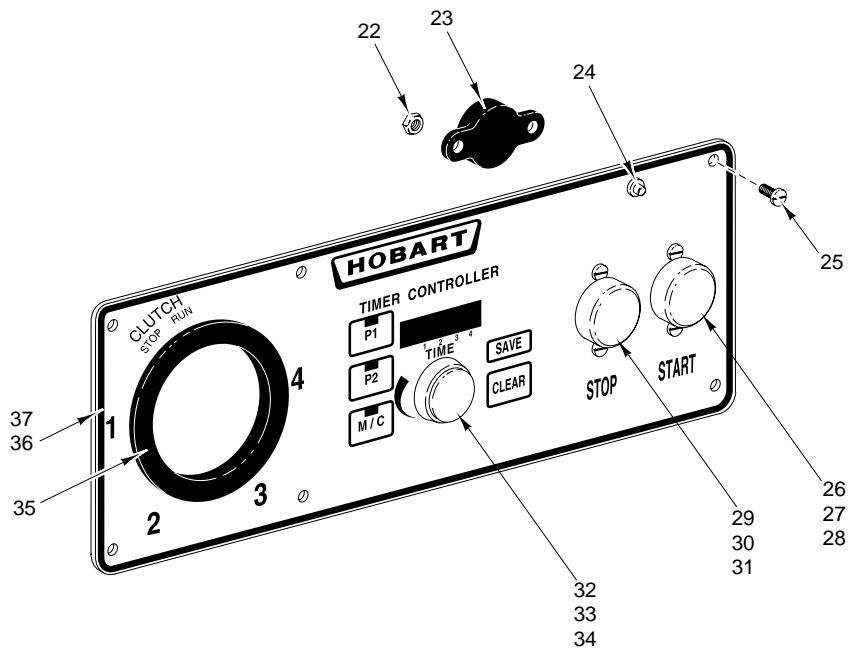
PL-55677

**ATTACHMENT HUB UNIT**

ILLUS.	PART NO.	NAME OF PART	AMT.
PL-55677			
1	64422-2	Bevel Pinion (Attach.) (21T) .....	1
2	PL-3-22	Plug 1 <sup>1</sup> / <sub>8</sub> Expansion .....	1
3	KW-3-15	Key - Woodruff #807 .....	1
4	291679	Sleeve - Square Drive (#12 Attachment Hub) .....	1
5	11091-3	Shim - Bevel Pinion (0.056 Thk.) .....	AR
6	11091-4	Shim - Bevel Pinion (0.062 Thk.) .....	AR
7	11091-5	Shim - Bevel Pinion (0.080 Thk.) .....	AR
8	11091-11	Shim - Bevel Pinion (0.074 Thk.) .....	AR
9	108197-2	Thumb Screw 1/2-12 .....	1
10	64612-5	Cover (Painted) (Plugs Attachment Hub Hole) .....	1
11	64612-4	Cover (Deluxe) (Plugs Attachment Hub Hole) .....	1
12	114824-1	Plug - Attachment Hub (Deluxe) .....	1
13	291680-3	Hub - Attachment (#12 Painted) .....	1
14	291680-5	Hub - Attachment (#12 Deluxe) .....	1
15	WL-4-6	Lockwasher 3/8 Light .....	4
16	SC-110-22	Cap Screw 3/8-16 x 1 1/4 Hex Hd. ....	4



**ROCKER STYLE**



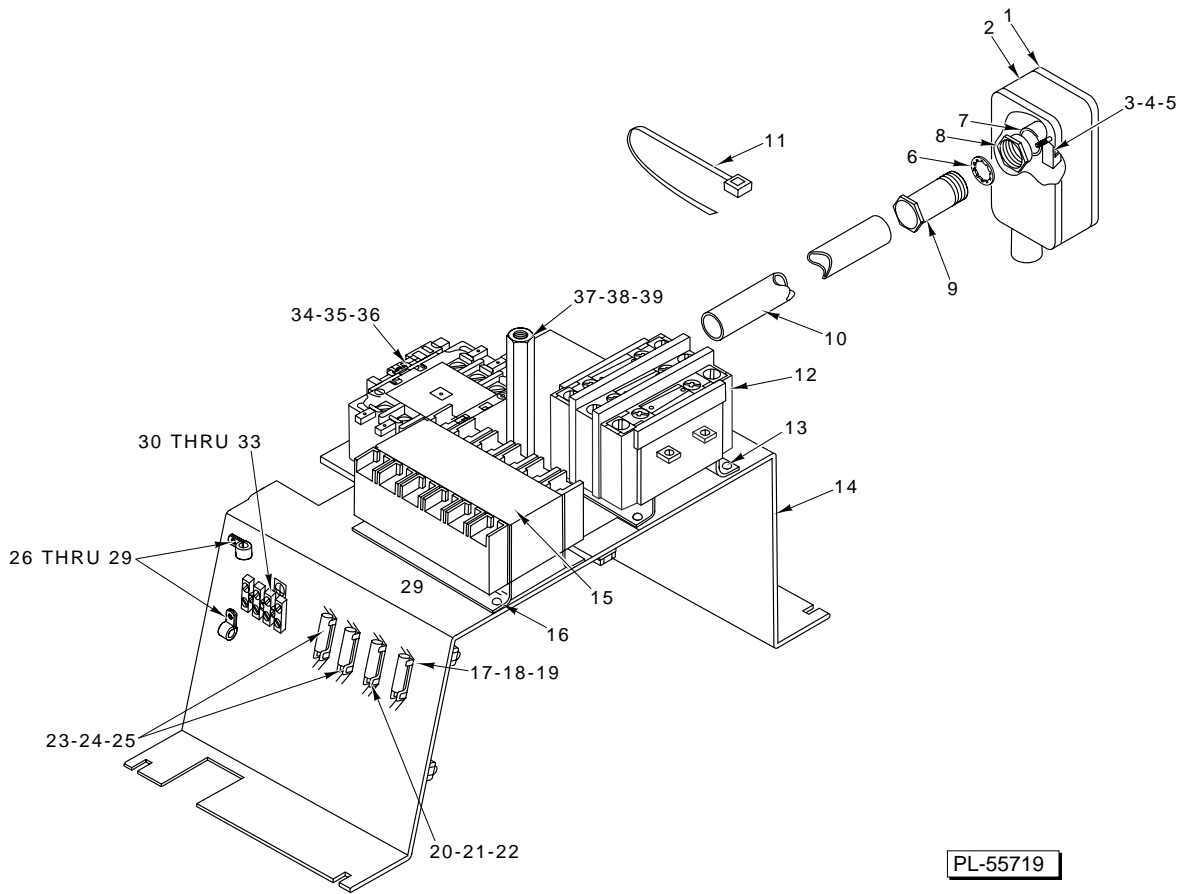
**ELECTRONIC**

**SWITCH PLATE AND TIMER UNIT**

PL-56084

**SWITCH PLATE AND TIMER UNIT**

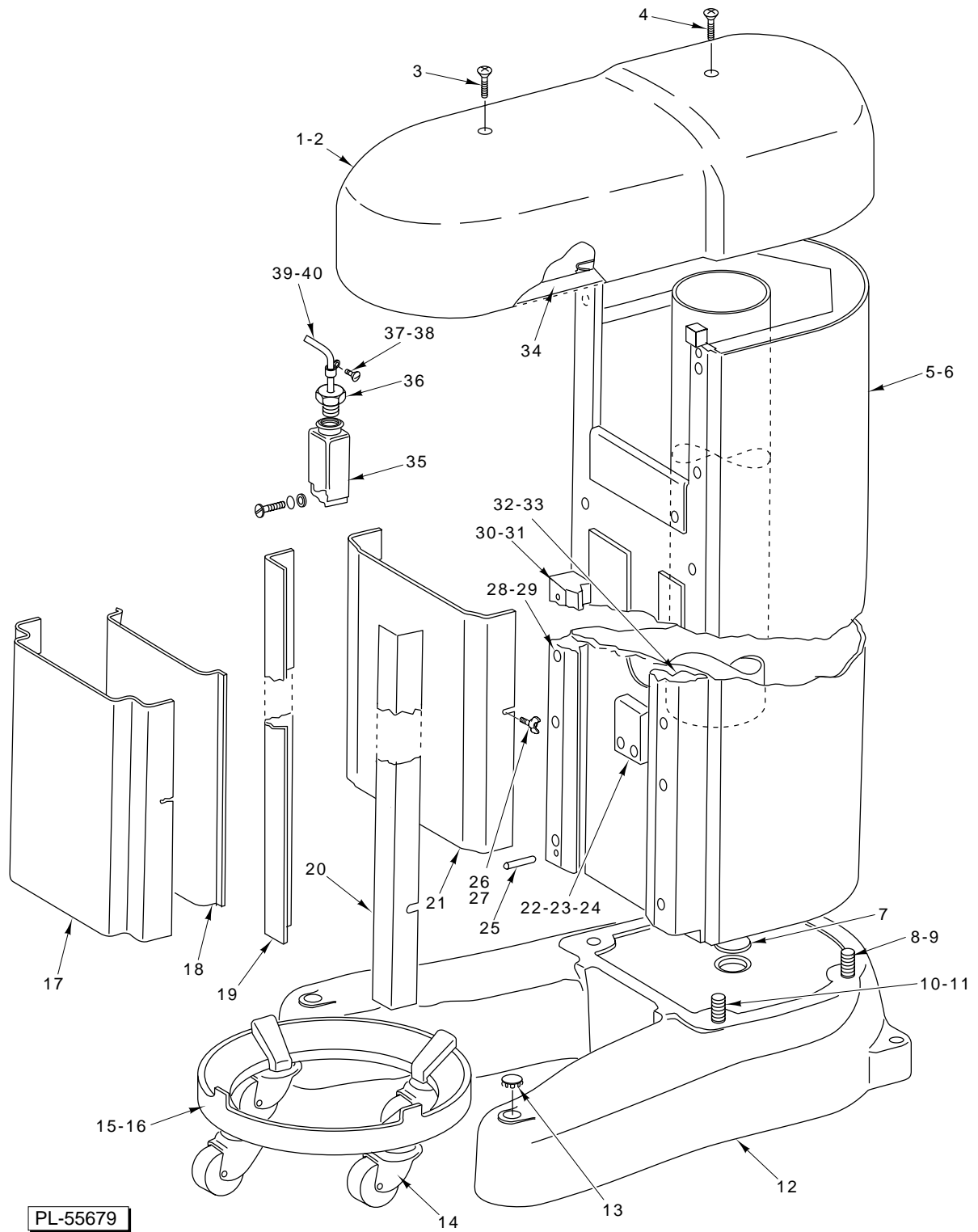
ILLUS. PL-56084	PART NO.	NAME OF PART	AMT.
1	291748	Knob – Timer .....	1
2	SC-13-7	Mach. Screw 5-40 x 1/4 Flat Hd. ....	2
3	123131	Self-Tapping Screw 8-32 x 3/8 Truss Hd. Taptite .....	6
4	64462	Grommet – Gear Shift Hub .....	1
5	291731-2	Plate – Switch (Standard Machine) .....	1
6	291733-2	Plate – Switch (Higher than Standard Machine) .....	1
7	294650-4-1	Timer Assy. (115 V., 60 Hz.) .....	1
8	294650-4-3	Timer Assy. (415 V., 50 Hz.) .....	1
9	294650-4-2	Timer Assy. ....	1
10	291750	Insulator – Switch .....	1
11	NS-31-1	Stop Nut 6-32 Elastic .....	4
12	SD-9-40	Self-Tapping Screw 6-32 x 3/4 Phil. Pan Hd., Type F .....	4
13	118349	Standoff – Reed Board (5/16 Lg.) .....	8
14	294854	Reed Mounting Board Assy. ....	2
15	124022	Insulator – Reed Mounting Board .....	2
16	294700-4-2	Pilot Light .....	1
17	120872-4	Switch – Operator's Stop .....	1
18	120872-2	Switch – Operator's Start .....	1
19	116525	Guard – Switch .....	1
20	123109	Screw 6-32 x 3/8 Serrated Hd. ....	2
21	WS-2-14	Washer .....	2
22	NS-46-17	Stop Nut 4-40 Hex .....	2
23	00-438499-2	Buzzer .....	1
24	294700-4-2	Pilot Light .....	1
25	123131	Self-Tapping Screw 8-32 x 3/8 Truss Hd. Taptite .....	6
26	87711-183-1	Switch – Push Button .....	1
27	102467-1	Cap – Push Button (Start) (Black) .....	1
28	SC-53-38	Mach. Screw 6-32 x 1/4 Truss Hd. ....	2
29	87711-183-2	Switch – Push Button .....	1
30	102467-2	Cap – Push Button (Stop) (Red) .....	1
31	SC-53-38	Mach. Screw 6-32 x 1/4 Truss Hd. ....	2
32	00-439289	Knob – Potentiometer W/Seal Nut .....	1
33	00-438171	Board – Display .....	1
34	00-439400-1	Board (120 V.) .....	1
35	64462	Grommet – Gear Shift Hub .....	1
36	00-438324-1	Switch Plate & Keypad Assy. (Standard Machine) .....	1
37	00-438324-3	Switch Plate & Keypad Assy. (Higher than Standard) .....	1



**ELECTRICAL UNIT**

**ELECTRICAL UNIT**

ILLUS.	PART NO.	NAME OF PART	AMT.
PL-55719			
1	FE-4-21	Cover – Junction Box .....	1
2	64495	Box – Junction .....	1
3	118544-1	Lug – Solderless .....	1
4	SD-24-1	Self-Tapping Screw 10-24 x 3/8 Pan Hd., Type TT .....	1
5	WL-10-6	Lockwasher #10 External Shakeproof .....	1
6	WL-19-5	Lockwasher 1 1/8 Internal Shakeproof .....	1
7	FE-7-14	Bushing 3/4 Conduit .....	1
8	FE-7-12	Lock Nut 3/4 Conduit .....	2
9	64494	Bushing – Conduit .....	1
10	62336-78	Conduit 1 x 12 Lg. (Non-Metallic) .....	1
11	113703	Cable Tie .....	AR
12	88196-5-1	Relay .....	1
13	SD-15-20	Self-Tapping Screw 10-32 x 3/8 Phil. Hd., Type TT .....	2
14	124676	Panel – Control .....	1
15	294500-34	Transformer .....	1
16	SD-15-20	Self-Tapping Screw 10-32 x 3/8 Phil. Hd., Type TT .....	2
17	FE-24-89	Fuse (0.25 Amp.) (250 V.) .....	1
18	294436-3	Block – Fuse .....	1
19	SD-15-38	Self-Tapping Screw 6-32 x 3/8 Phil. Hd., Type TT .....	1
20	FE-25-69	Fuse (0.6 Amp.) (250 V.) .....	1
21	294436-3	Block – Fuse .....	1
22	SD-15-38	Self-Tapping Screw 6-32 x 3/8 Phil. Hd., Type TT .....	1
23	FE-25-68	Fuse (0.2 Amp.) (250 V.) .....	2
24	294436-3	Block – Fuse .....	2
25	SD-15-38	Self-Tapping Screw 6-32 x 3/8 Phil. Hd., Type TT .....	2
26	78752-4	Clamp – Wire .....	2
27	SC-8-10	Mach. Screw 10-24 x 1/4 .....	2
28	NS-44-9	Nut Assy. .....	2
29	WL-7-12	Lockwasher #10 External .....	2
30	477562-2	Block – Terminal .....	1
31	SC-9-85	Mach. Screw 6-32 x 1 1/4 Rd. Hd. .....	2
32	WL-19-32	Lockwasher #6 External .....	2
33	NS-9-7	Mach. Nut 6-32 Hex .....	2
34	87713-101-2	Contactor – 3P 30 Amp./Aux. (115 V.) .....	1
35	87713-101-1	Contactor – 3P 30 Amp./Aux. (200 V.) .....	1
36	SD-15-20	Self-Tapping Screw 10-32 3/8 Phil. Hd., Type TT .....	2
37	124655	Support – Top Cover .....	1
38	SC-36-14	Cap Screw 1/4-20 x 1/2 Hex Hd. .....	1
39	WL-3-38	Lockwasher 1/4 Light .....	1

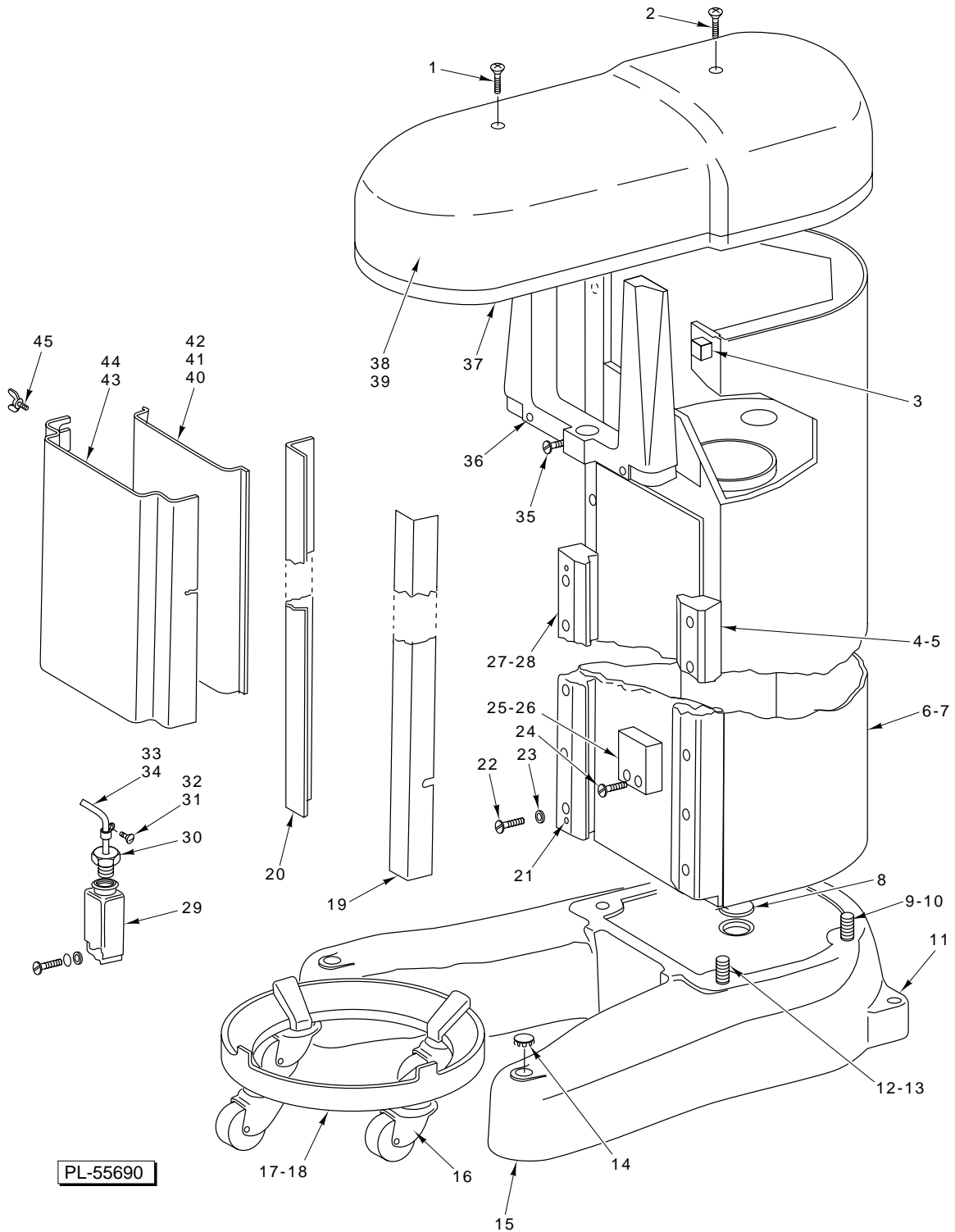


**BASE AND PEDESTAL UNIT  
(M802 SERIES)**



**BASE AND PEDESTAL UNIT  
(M802 SERIES)**

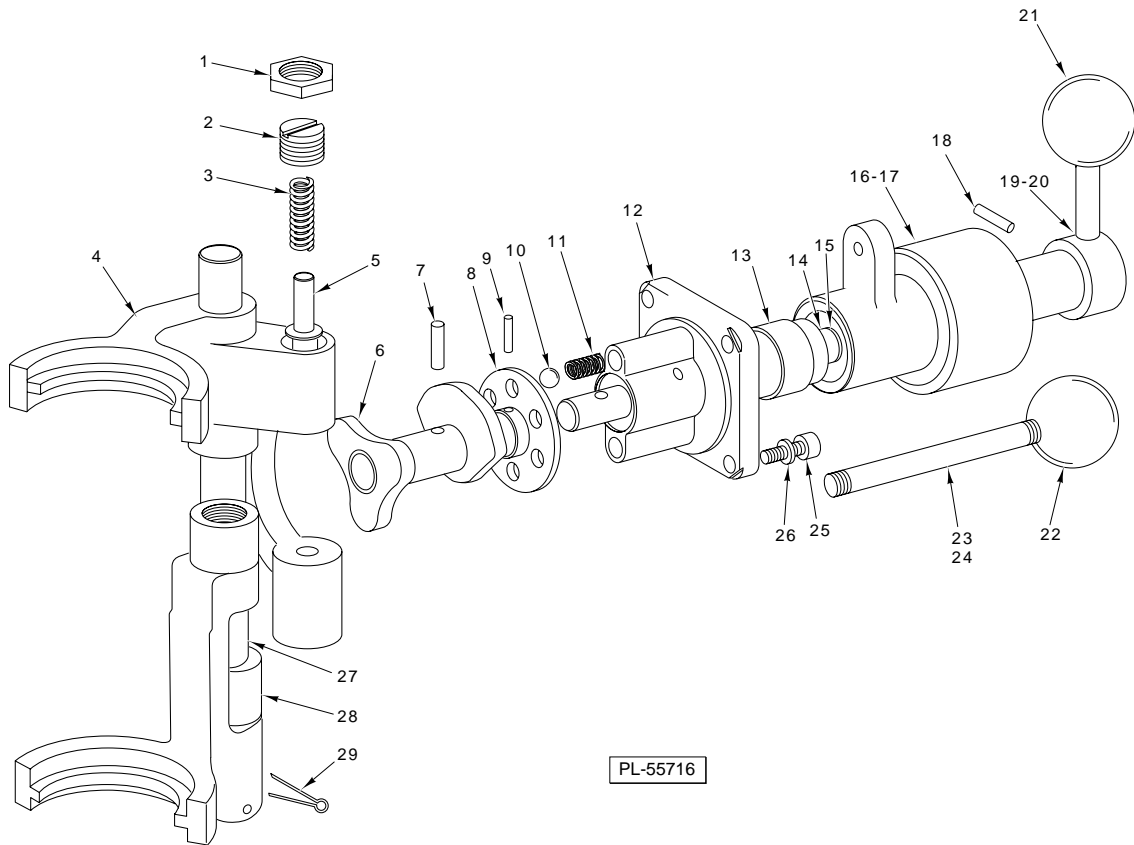
ILLUS.	PART NO.	NAME OF PART	AMT.
PL-55679			
1	00-478571-9	Top Cover Assy. (ML-104687 & ML-104694) (Incls. Item 34)	1
2	00-478571-10	Top Cover Assy. (ML-104696) (Incls. Item 34)	1
3	SC-120-30	Mach. Screw 1/4-20 x 2 Oval Hd.	1
4	SC-120-29	Mach. Screw 1/4-20 x 1 Phil. Oval Hd.	1
5	477112-1	Pedestal Assy. (Std.)	1
6	00-477112-2	Pedestal Assy. (ML-104694)	1
7	PL-3-39	Plug 2 1/4 Expansion	1
8	SC-37-1	Cap Screw 1/2-13 x 1 1/2 Hex Hd.	2
9	WL-4-36	Lockwasher 1/2 Light	2
10	SC-37-36	Cap Screw 5/8-11 x 3 1/2 Hex Hd.	2
11	WL-4-18	Lockwasher 5/8 Light	2
12	64362-2	Base	1
13	72442-1	Plug – Button (Used to Plug Holes for Hold Down Bolts)	4
14	87669-1	Caster – Bowl Truck	4
15	315011	Bowl Truck Assy. (Painted) (Pkg.) (Incls. Item 14)	1
16	315013	Bowl Truck Assy. (Aluminum) (Pkg.) (Incls. Item 14)	1
17	86502	Outer Apron Assy. (ML-104694)	1
18	77495	Apron – Inner (ML-104694)	1
19	77497	Cover – Slideway (LH) (ML-104694)	1
20	77496	Cover – Slideway (RH) (ML-104694)	1
21	64471	Apron (ML-104687)	1
22	290407-1	Block – Stop (ML-104687)	1
23	290407-2	Block – Stop (ML-104694)	1
24	SC-40-69	Cap Screw 1/2-20 x 2 Soc. Fil. Hd.	2
25	11800-143	Dowel	2
26	70641-9	Thumb Screw (ML-104687)	2
27	70641-9	Thumb Screw (ML-104694) (Cover)	4
28	SC-40-69	Cap Screw 1/2-20 x 2 Soc. Fil. Hd.	AR
29	WL-4-13	Lockwasher 1/2 Medium	AR
30	00-479597	Slideway (LH) (ML-104687)	1
31	00-479623	Slideway (LH) (ML-104694)	1
32	00-479598	Slideway (RH) (ML-104687)	1
33	00-479624	Slideway (RH) (ML-104694)	1
34	123687-5	Seat – Top Cover (Rubber)	1
35	87711-249	Limit Switch	1
36	FE-22-84	Strain Relief (Hevco #3231) (Liquid Tight)	1
37	78752-3	Clamp – Cable	1
38	SC-8-41	Mach. Screw 10-32 x 1/2 Rd. Hd.	1
39	294853-16	Cable – Control	1
40	270632	Bushing – Snap (Used to Route Cable thru Pedestal Wall)	1



**BASE AND PEDESTAL UNIT  
(V1401 SERIES)**

**BASE AND PEDESTAL UNIT  
(V1401 SERIES)**

ILLUS. PL-55690	PART NO.	NAME OF PART	AMT.
1	SC-120-30	Mach. Screw 1/4-20 x 2 Oval Hd. ....	1
2	SC-120-29	Mach. Screw 1/4-20 x 1 Phil. Oval Hd. ....	1
3	11800-180	Dowel .....	1
4	00-479626	Slideway (RH) (ML-104674) .....	1
5	00-479628	Slideway (RH) (ML-104686) .....	1
6	477113-1	Pedestal Assy. (ML-104674) .....	1
7	477113-2	Pedestal Assy. (ML-104686) .....	1
8	PL-3-39	Plug 2 1/4 Expansion .....	1
9	SC-37-1	Cap Screw 1/2-13 x 1 1/2 Hex Hd. ....	2
10	WL-6-36	Lockwasher 1/2 Light .....	2
11	72442-1	Plug – Button (Used to Plug Holes for Hold Down Bolts) .....	2
12	SC-37-36	Cap Screw 5/8-11 x 3 1/2 Hex Hd. ....	2
13	WL-4-18	Lockwasher 5/8 Light .....	2
14	72442-1	Plug – Button (Used to Plug Holes for Hold Down Bolts) .....	2
15	67880-2	Base .....	1
16	87669-1	Caster – Bowl Truck .....	4
17	315011	Bowl Truck Assy. (Painted) (Pkg.) (Incls. Item 16) .....	1
18	315013	Bowl Truck Assy. (Aluminum) (Pkg.) (Incls. Item 16) .....	1
19	102151	Slideway Cover Assy. (RH) (ML-104686) .....	1
20	102155	Slideway Cover Assy. (LH) (ML-104686) .....	1
21	11800-143	Dowel .....	2
22	SC-40-69	Cap Screw 1/2-20 x 2 Soc. Fil. Hd. ....	AR
23	WL-4-13	Lockwasher 1/2 Medium .....	AR
24	SC-40-69	Cap Screw 1/2-20 x 2 Soc. Fil. Hd. ....	2
25	290408-1	Block – Stop (ML-104674) .....	1
26	290408-2	Block – Stop (ML-104686) (Not Shown) .....	1
27	00-479626	Slideway (LH) (ML-104674) .....	1
28	00-479628	Slideway (LH) (ML-104686) .....	1
29	87711-249	Limit Switch .....	1
30	FE-22-84	Strain Relief (Heyco #3231) (Liquid Tight) .....	1
31	SC-8-41	Mach. Screw 10-32 x 1/2 Rd. Hd. ....	1
32	78752-3	Clamp – Cable .....	1
33	294853-16	Cable – Control .....	1
34	270632	Bushing – Snap (Used to Route Cable thru Pedestal Wall) .....	1
35	SC-40-45	Cap Screw 5/8-11 x 2 Soc. Fil. Hd. ....	1
36	67923-2	Adapter – Transmission Case .....	1
37	123687-6	Seat – Top Cover (Rubber) .....	1
38	00-478571-11	Top Cover Assy. (Incls. Item 37) (ML-104674 & ML-104686) .....	1
39	00-478571-12	Top Cover Assy. (Incls. Item 37) (ML-104683) .....	1
40	291201	Apron – Inner .....	1
41	SC-10-32	Mach. Screw 8-32 x 3/8 Truss Hd. ....	2
42	102150	Apron – Inner (ML-104686) .....	1
43	67906	Apron (ML-104674) .....	1
44	102147	Apron (ML-104686) .....	1
45	70641-9	Thumb Screw .....	4

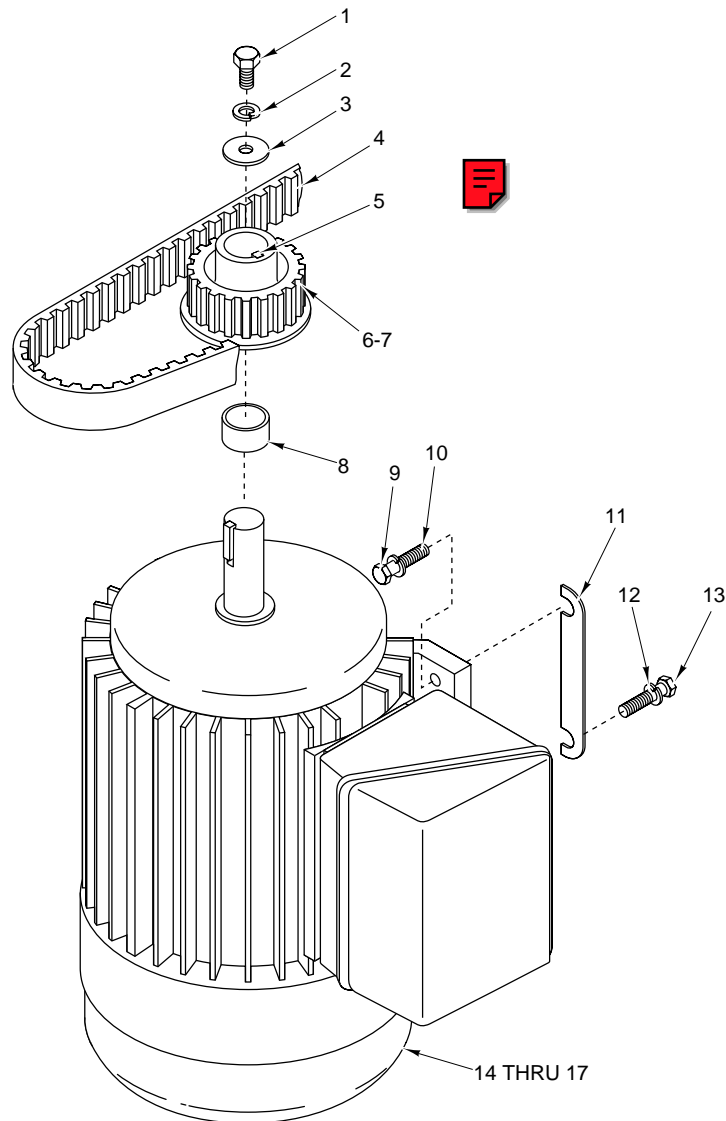


**SHIFTING UNIT**

**SHIFTING UNIT**

ILLUS.	PART NO.	NAME OF PART	AMT.
PL-55716			
1	24232	Nut – Plunger Screw .....	3
2	60723	Screw – Shifting Plunger .....	4
3	24233	Spring – Shifting Plunger .....	4
4	24229	Yoke – Upper Shifting .....	1
5	24230	Plunger – Shifting Yoke .....	4
6	24249	Gear Shift Cam Assy. ....	1
7	RP-2-6	Roll Pin 1/4 Dia. x 1 Lg. ....	1
8	61922-2	Hub and Cam Assy. ....	1
9	RP-2-10	Roll Pin 3/16 Dia. x 1 Lg. ....	1
10	BA-2-18	Ball 3/8 Dia. ....	2
11	7009	Spring .....	2
12	64413	Bracket – Gear Shift .....	1
13	11972	Bushing – Clutch Hub .....	2
14	64417	Shaft – Gear Shift .....	1
15	67500-6	O-Ring .....	1
16	00-873096-4	Clutch Handle Hub Assy. (Painted) (Incls. Item 13) .....	1
17	00-873096-3	Clutch Handle Hub Assy. (Deluxe) (Incls. Item 13) .....	1
18	RP-2-10	Roll Pin 3/16 Dia. x 1 Lg. ....	1
19	64553-5	Gear Shift Handle & Hub Assy. (Painted) .....	1
20	64553-4	Gear Shift Handle & Hub Assy. (Deluxe) .....	1
21	64645	Knob (Gear Shift) .....	1
22	64645	Knob (Clutch) .....	1
23	64418-1	Handle – Clutch (Painted) .....	1
24	64418-3	Handle – Clutch (Deluxe) .....	1
25	SC-11-93	Mach. Screw 5/16-18 x 3/4 Fil. Hd. ....	4
26	WL-3-43	Lockwasher 5/16 Light .....	4
27	64830	Shaft – Shifter .....	1
28	24228	Yoke – Lower Shifting .....	1
29	PC-3-24	Cotter Pin 1/16 x 1 1/2 .....	1

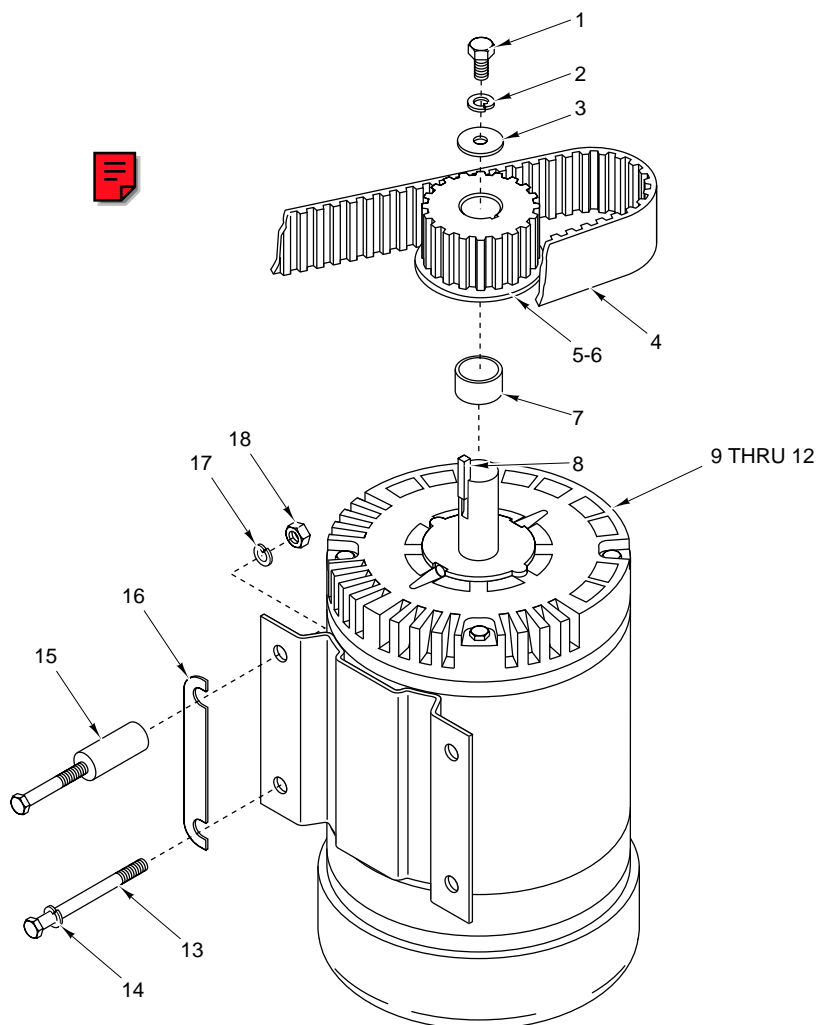
MODELS M802 & V1401 SERIES MIXERS REPLACEMENT PARTS



PL-55688

**MOTOR UNIT  
(M802 SERIES)**

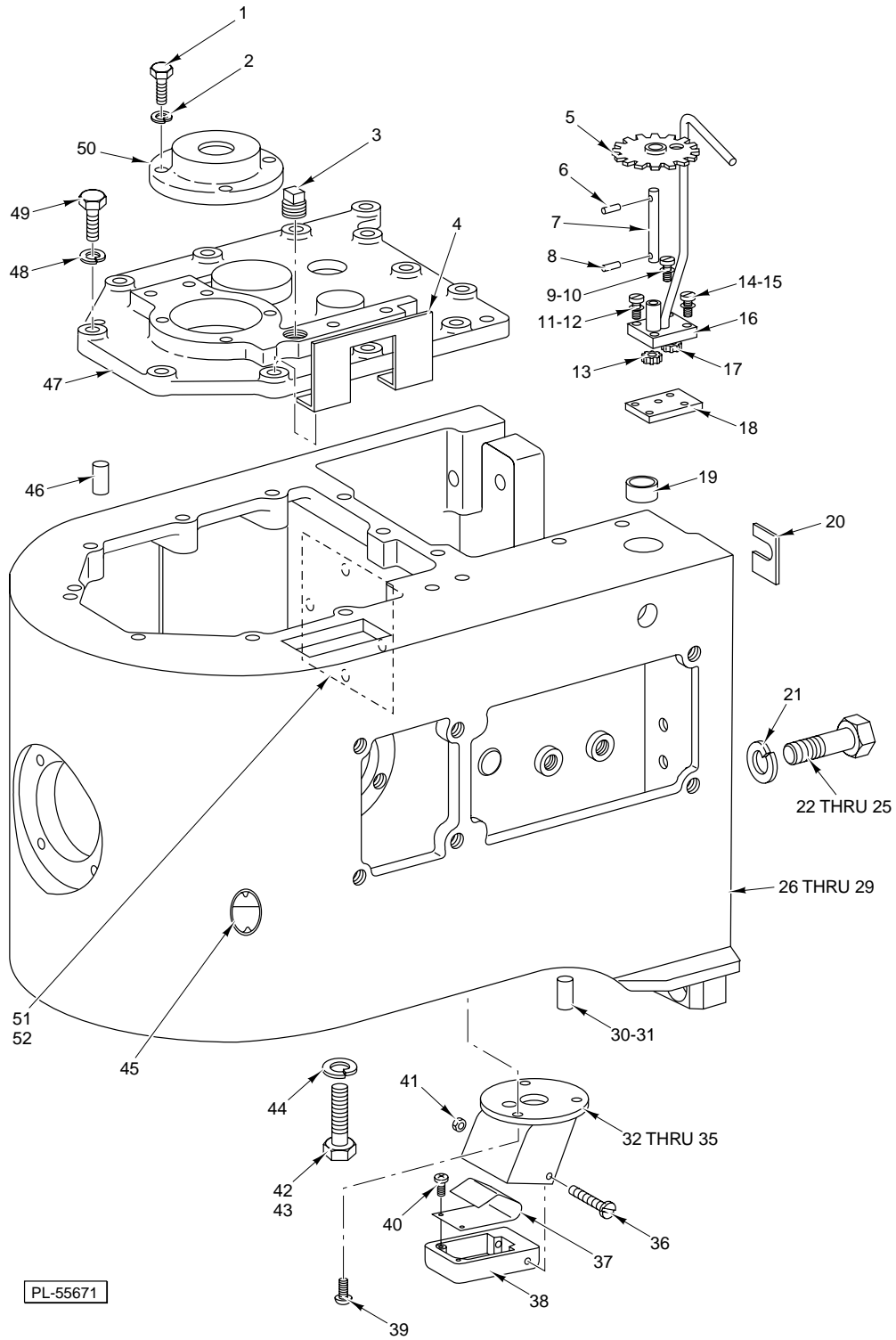
ILLUS.	PART NO.	NAME OF PART	AMT.
PL-55688			
1	SC-118-60	Cap Screw $\frac{3}{8}$ -16 x $\frac{3}{4}$ Hex Hd. ....	1
2	WL-4-6	Lockwasher $\frac{3}{8}$ Light .....	1
3	WS-18-41	Washer .....	1
4	65107	Flexa-Gear .....	1
5	109070-19	Key - $\frac{1}{4}$ x $\frac{1}{4}$ x $1\frac{1}{2}$ .....	1
6	00-478237	Drive Gear (Flexa-Gear) (24T) (60 Hz.) .....	1
7	00-478238	Drive Gear (Flexa-Gear) (27T) (50 Hz.) .....	1
8	118816	Spacer .....	1
9	SC-110-22	Cap Screw $\frac{3}{8}$ -16 x $1\frac{1}{4}$ Hex Hd. ....	2
10	WL-4-6	Lockwasher $\frac{3}{8}$ Light .....	2
11	00-478323	Shim - Motor .....	AR
12	WL-4-6	Lockwasher $\frac{3}{8}$ Light .....	2
13	SC-36-60	Cap Screw $\frac{3}{8}$ -16 x $1\frac{3}{4}$ Hex Hd. ....	2
14	00-478380-3	Motor (Give Electrical Spec.) .....	1
15	00-478380-1	Motor (Give Electrical Spec.) .....	1
16	00-478380-5	Motor (Give Electrical Spec.) .....	1
17	00-478380-7	Motor (Give Electrical Spec.) .....	1



PL-55689

**MOTOR UNIT  
(V1401 SERIES)**

ILLUS.	PART NO.	NAME OF PART	AMT.
	PL-55689		
1	SC-36-52	Cap Screw $\frac{3}{8}$ -16 x $\frac{3}{4}$ Hex Hd. ....	1
2	WL-4-6	Lockwasher $\frac{3}{8}$ Light .....	1
3	WS-18-41	Washer .....	1
4	68043	Flexa - Gear .....	1
5	00-478239	Pulley & Timing (20T) (60 Hz.) .....	1
6	00-478240	Pulley & Timing (23T) (50 Hz.) .....	1
7	118816	Spacer .....	1
8	109070	Key - $\frac{1}{4}$ x $\frac{1}{4}$ x $1\frac{1}{2}$ .....	1
9	00-478380-2	Motor Assy. ....	1
10	478380-4	Motor ( 380/400/415/50/3 .) .....	1
11	00-478380-6	Motor (Give Electrical Spec.) .....	1
12	00-478380-8	Motor (Give Electrical Spec.) .....	1
13	SC-62-9	Cap Screw $\frac{3}{8}$ -16 x 4 Hex Hd. ....	2
14	WL-4-6	Lockwasher $\frac{3}{8}$ Light .....	2
15	9007	Spacer - Motor .....	4
16	00-478323	Shim - Motor .....	AR
17	WL-4-6	Lockwasher $\frac{3}{8}$ Light .....	2
18	NS-13-22	Nut $\frac{3}{8}$ -16 Hex .....	2

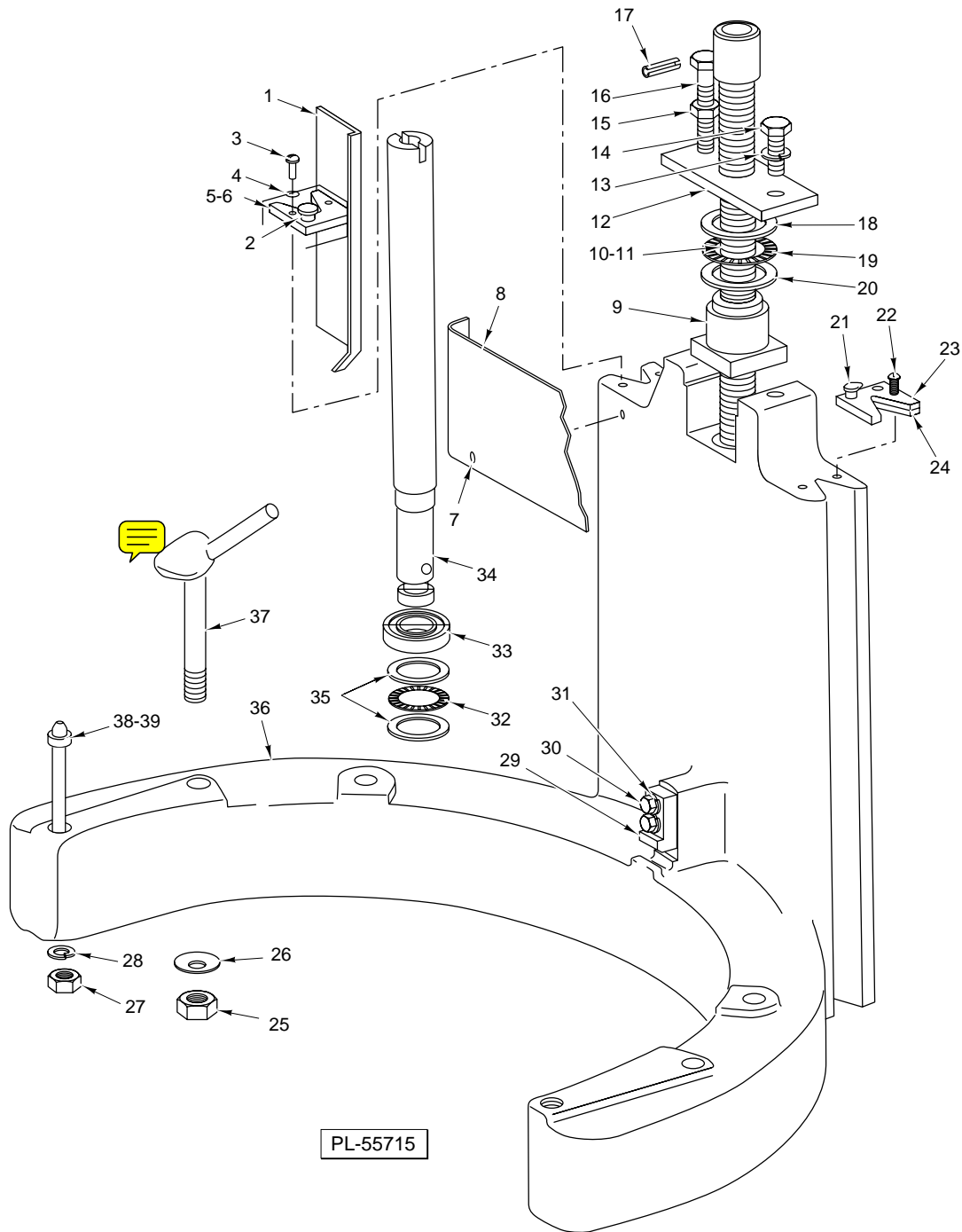


**TRANSMISSION CASE UNIT**



**TRANSMISSION CASE UNIT**

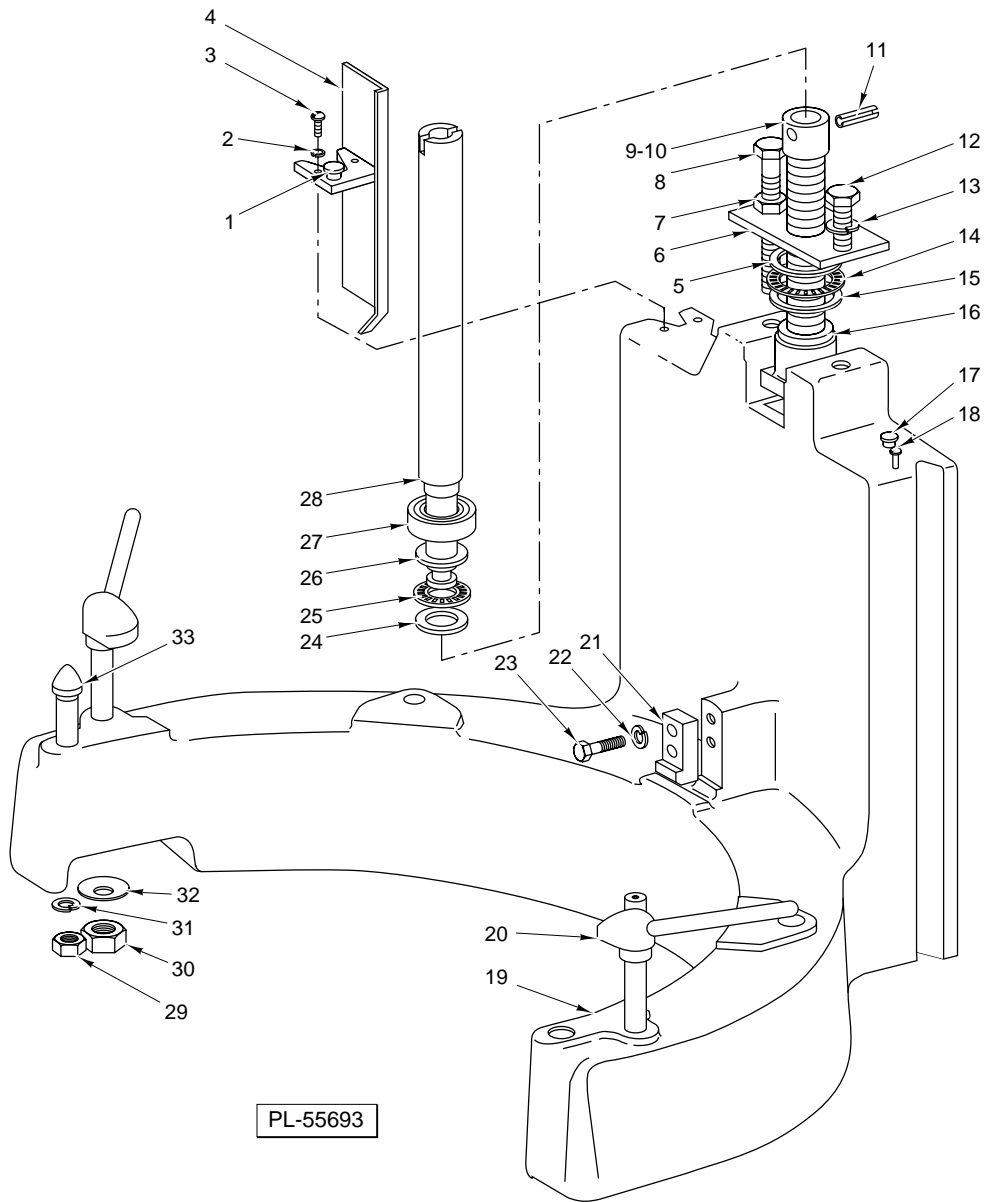
ILLUS. PL-55671	PART NO.	NAME OF PART	AMT.
1	SC-120-38	Cap Screw <sup>5</sup> / <sub>16</sub> -18 x 1 Hex Hd. ....	4
2	WL-3-48	Lockwasher <sup>5</sup> / <sub>16</sub> High Collar ....	4
3	FP-28-13	Pipe Plug <sup>1</sup> / <sub>2</sub> Sq. Hd. ....	1
4	00-479034	Stop – Clutch Arm ....	1
5	64554	Drive Gear Assy. (25T) ....	1
6	RP-2-8	Roll Pin <sup>5</sup> / <sub>64</sub> Dia. x <sup>11</sup> / <sub>16</sub> Lg. ....	1
7	186272	Shaft – Oil Pump ....	1
8	538772	Dowel <sup>3</sup> / <sub>32</sub> Dia. x <sup>11</sup> / <sub>32</sub> Lg. ....	1
9	SC-11-10	Mach. Screw 8-32 x <sup>5</sup> / <sub>8</sub> Fil. Hd. ....	1
10	WL-3-15	Lockwasher #8 Light ....	1
11	SC-12-47	Mach. Screw 10-32 x <sup>5</sup> / <sub>8</sub> Fil. Hd. ....	1
12	WL-3-22	Lockwasher #10 Light ....	1
13	186270	Gear – Oil Pump (15T) (Slotted) ....	1
14	SC-12-48	Mach. Screw 10-32 x <sup>7</sup> / <sub>8</sub> Fil. Hd. ....	2
15	WL-3-22	Lockwasher #10 Light ....	2
16	123680	Housing & Tube Assy. ....	1
17	290277	Gear – Oil Pump (15T) (Slotted) ....	1
18	64488	Plate – Oil Pump Bottom ....	1
19	6651	Bushing – Insulating ....	3
20	72992-3	Shim – Transmission Case (0.036 Thk.) ....	AR
21	WL-4-19	Lockwasher <sup>5</sup> / <sub>8</sub> Medium ....	5
22	SC-37-98	Cap Screw <sup>5</sup> / <sub>8</sub> -11 x 1 <sup>3</sup> / <sub>4</sub> Hex Hd. (ML-104687, ML-104694, & ML-104696) ....	3
23	SC-37-93	Cap Screw <sup>5</sup> / <sub>8</sub> -11 x 2 Hex Hd. (ML-104687, ML-104694, & ML-104696) ....	2
24	SC-62-16	Cap Screw <sup>5</sup> / <sub>8</sub> -11 x 3 <sup>3</sup> / <sub>4</sub> Hex Hd. (ML-104674, ML-104686, & ML-104683) ....	3
25	SC-62-17	Cap Screw <sup>5</sup> / <sub>8</sub> -11 x 3 <sup>1</sup> / <sub>2</sub> Hex Hd. (ML-104674, ML-104686, & ML-104683) ....	2
26	74197-9	Case – Transmission (Painted) (ML-104687, ML-104694, & ML-104696) ....	1
27	74197-1	Case – Transmission (Deluxe) (ML-104687, ML-104694, & ML-104696) ....	1
28	74198-4	Case – Transmission (Painted) (ML-104674, ML-104686, & ML-104683) ....	1
29	74198-6	Case – Transmission (Deluxe) (ML-104674, ML-104686, & ML-104683) ....	1
30	11800-180	Dowel (ML-104687, ML-104694, & ML-104696) ....	2
31	11800-142	Dowel (ML-104674, ML-104686, & ML-104683) ....	2
32	00-438124-2	Housing – Switch (Painted) (ML-104687, ML-104694, & ML-104696) ....	1
33	00-438124-3	Housing – Switch (Deluxe) (ML-104687, ML-104694, & ML-104696) ....	1
34	00-438051-2	Housing – Switch (Painted) (ML-104674, ML-104686, & ML-104683) ....	1
35	00-438051-3	Housing – Switch (Deluxe) (ML-104674, ML-104686, & ML-104683) ....	1
36	SC-116-66	Mach. Screw 8-32 x 2 Rd. Hd. ....	1
37	00-437435	Spring – Reed Switch ....	1
38	87711-304-1	Housing – Reed Switch ....	1
39	SC-21-15	Mach. Screw 8-32 x <sup>1</sup> / <sub>2</sub> Rd Hd., Slotted ....	3
40	SC-18-50	Mach. Screw 6-32 x <sup>1</sup> / <sub>4</sub> Pan Hd. ....	2
41	NS-48-11	Lock Nut 8 x 32 ....	1
42	SC-62-60	Cap Screw <sup>1</sup> / <sub>2</sub> -20 x 1 Hex Hd. (Painted) ....	1
43	SC-37-26	Cap Screw <sup>1</sup> / <sub>2</sub> -20 x 1 Hex Hd. (Deluxe) ....	1
44	WS-21-21	Washer ....	1
45	22793	Gauge – Oil Level ....	1
46	11800-224	Dowel ....	2
47	106868	Cover – Transmission Case ....	1
48	WL-4-6	Lockwasher <sup>3</sup> / <sub>8</sub> Light ....	11
49	SC-123-83	Cap Screw <sup>3</sup> / <sub>8</sub> -16 x 1 <sup>1</sup> / <sub>2</sub> Hex Hd. ....	11
50	106867	Retainer – Upper Bearing ....	1
51	291641	Plate – Cover ....	1
52	SC-18-14	Mach. Screw 10-32 x <sup>3</sup> / <sub>8</sub> ....	4



**BOWL SUPPORT UNIT  
(M802 SERIES)**

**BOWL SUPPORT UNIT  
(M802 SERIES)**

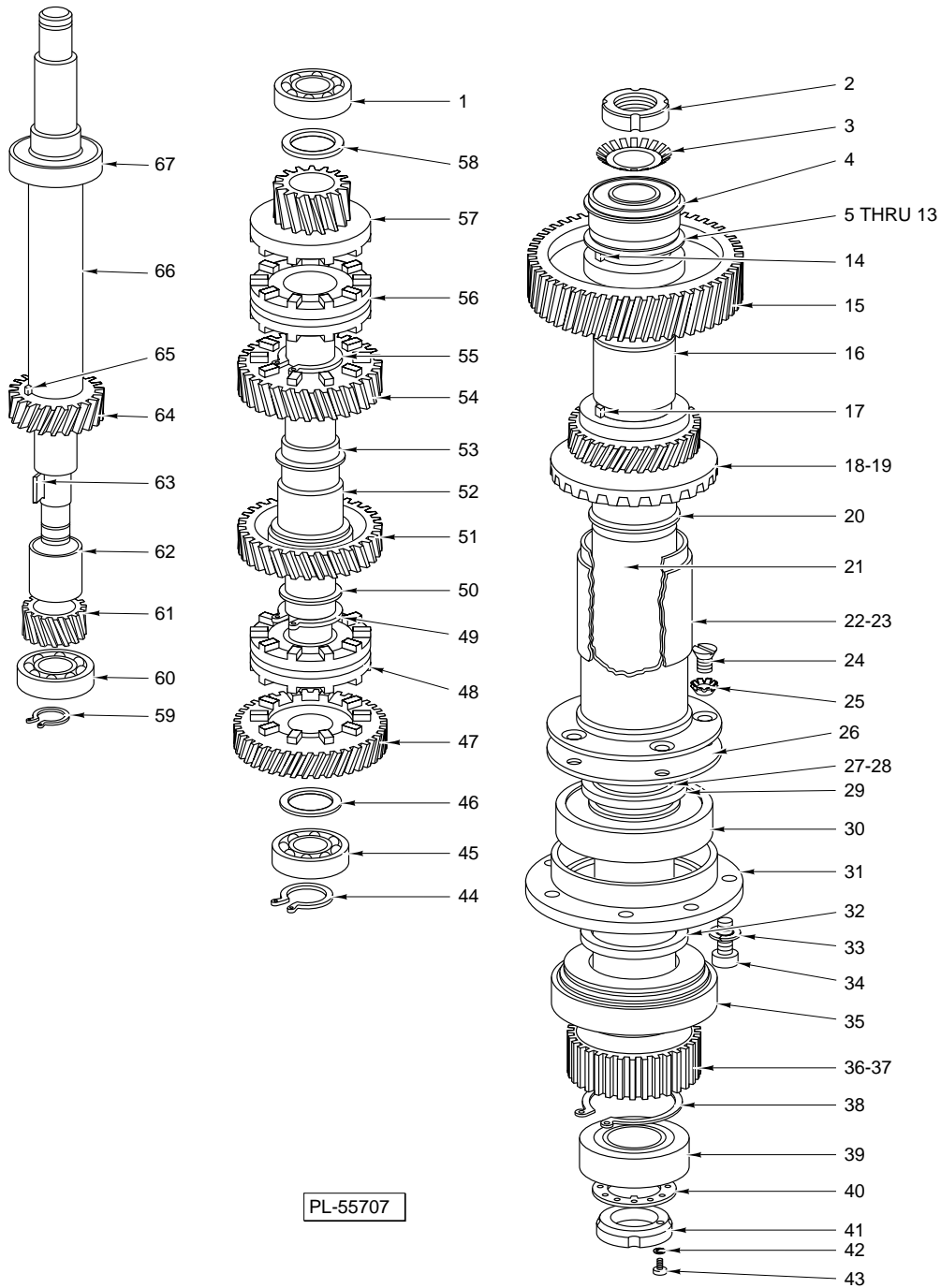
ILLUS. PL-55715	PART NO.	NAME OF PART	AMT.
1	00-439116	Bracket – Limit Switch .....	1
2	OG-3-23	Oiler .....	1
3	SC-112-39	Mach. Screw 8-32 x 3/4 Rd. Hd. ....	2
4	WL-7-7	Lockwasher #8 External Shakeproof .....	2
5	65682	Retainer – Wiper .....	1
6	65683	Wiper – Felt .....	1
7	SC-10-32	Mach. Screw 8-32 x 3/8 Truss Hd. ....	2
8	291195	Apron – Inner (Std.) .....	1
9	68322	Nut – Bowl Lift .....	1
10	290367-1	Screw – Bowl Lift (Std.) .....	1
11	290367-2	Screw Bowl Lift (ML-104694 & ML-104686) .....	1
12	64392	Retainer – Nut .....	1
13	WL-4-13	Lockwasher 1/2 Medium .....	1
14	SC-36-98	Cap Screw 1/2-13 x 1 1/4 Hex Hd. ....	1
15	NS-13-30	Nut 1/2-13 Hex .....	1
16	SC-124-95	Stop Screw – Bowl Yoke (Cap Screw 1/2-13 x 3 1/2 Hex Hd.) .....	1
17	PS-4-21	Spiral Pin 3/8 Dia. 1/2 Lg. ....	1
18	68321	Washer – Lift Screw Thrust .....	1
19	BN-2-11	Needle Bearing – Thrust .....	1
20	68321	Washer – Lift Screw Thrust .....	1
21	OG-3-23	Oiler .....	1
22	SC-11-10	Mach. Screw 8-32 x 5/8 Rd. Hd. ....	2
	65682	Retainer – Wiper .....	1
	65683	Wiper – Felt .....	1
25	NS-46-18	Lock Nut 5/8-11 Hex (Nylok) .....	2
26	64636	Washer – Bowl Clamp .....	2
27	NS-13-30	Nut 1/2-13 Hex .....	2
28	WL-4-11	Lockwasher 1/2 Light .....	2
29	64394	Retainer – Bowl .....	1
30	SC-36-27	Cap Screw 5/16-18 x 1 Hex Hd. ....	2
31	WL-3-44	Lockwasher 5/16 Medium .....	2
32	BN-2-18	Needle Bearing – Torrington (#NTA-1423) .....	1
33	BB-15-8	Ball Bearing (MRC 105KSZZ-01-ST-A-92-C) .....	1
34	64389	Extension – Lift Screw .....	1
35	64558	Washer – Trust .....	2
36	122929-2	Support Bowl .....	1
37	65922-20	Bowl Clamp Assy. ....	2
38	WS-8-2	Washer .....	AR
39	20979-1	Stud – Bowl Locating .....	2



**BOWL SUPPORT UNIT  
(V1401 SERIES)**

**BOWL SUPPORT UNIT  
(V1401 SERIES)**

ILLUS. PL-55693	PART NO.	NAME OF PART	AMT.
1	OG-3-23	Oiler .....	1
2	WL-7-7	Lockwasher #8 External.....	2
3	SC-9-68	Mach. Screw 8-32 x 3/4 Rd. Hd. ....	2
4	00-439117	Bracket – Limit Switch .....	1
5	68321	Washer – Lift Screw Thrust .....	1
6	67955	Retainer – Nut .....	1
7	NS-13-30	Nut 1/2-13 Hex .....	1
8	SC-124-93	Stop Screw – Bowl Yoke.....	1
9	290367-4	Bowl Lift Screw Assy. (ML-104686) .....	1
10	290367-3	Bowl Lift Screw Assy. (ML-104674 & ML-104683) .....	1
11	PS-4-21	Spiral Pin 3/8 Dia. x 1 1/2 Lg .....	1
12	SC-36-98	Cap Screw 1/2-13 x 1 1/4 Hex Hd. ....	1
13	WL-4-13	Lockwasher 1/2 Medium .....	1
14	BN-2-11	Needle Bearing – Thrust .....	1
15	68321	Washer – Lift Screw Thrust .....	1
16	68322	Nut – Bowl Lift.....	1
17	OG-3-23	Oiler .....	2
18	SC-7-44	Mach. Screw 8-32 x 5/8 Rd. Hd. ....	2
19	122930-2	Support Bowl .....	1
20	65922-20	Bowl Clamp Assy. ....	2
21	64394	Retainer – Bowl.....	1
22	WL-3-44	Lockwasher 5/16 Medium.....	2
23	SC-120-38	Cap Screw 5/16-18 x 1 Hex Hd. ....	2
24	64558	Washer – Thrust .....	1
25	BN-2-18	Needle Bearing – Torrington (#NTA-1423) .....	1
26	64558	Washer – Trust .....	1
27	BB-17-39	Ball Bearing (MRC 205 SZZ-01-ST-A-92-C).....	1
28	64389	Extension – Lift Screw .....	1
29	NS-13-30	Nut 1/2-13 Hex .....	2
30	NS-46-18	Lock Nut 5/8-11 Hex Nylok .....	2
31	WL-4-11	Lockwasher 1/2 Light .....	2
32	64636	Washer – Bowl Clamp .....	2
33	19195-1	Stud – Bowl Locating .....	2

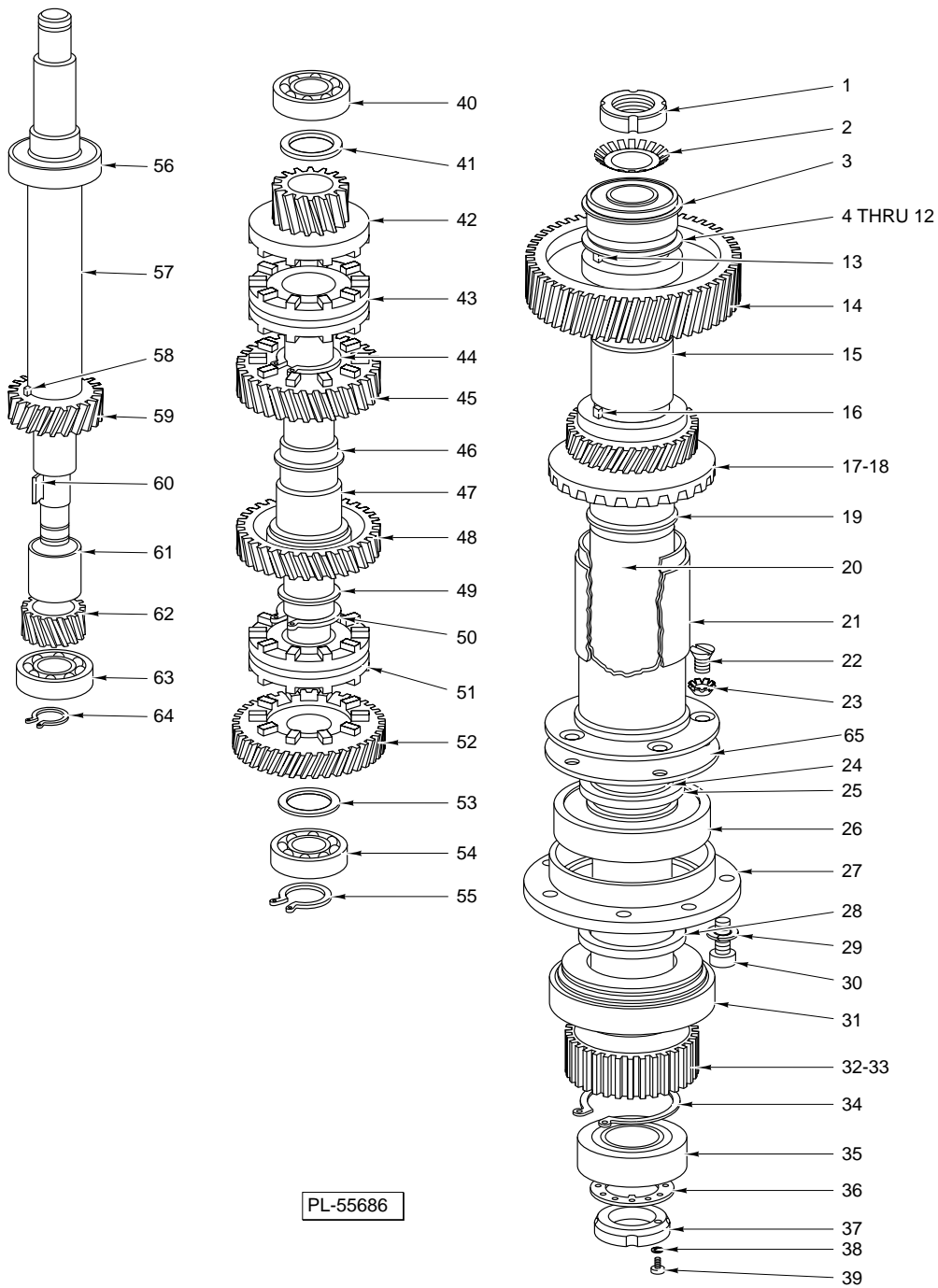


**TRANSMISSION GEAR UNIT  
(M802 SERIES)**

ILLUS. PL-55707	PART NO.	NAME OF PART	AMT.
1	BB-18-33	Ball Bearing (Fafnir #205KF) .....	1
2	NS-34-8	Lock Nut – N.D. #N-07 .....	1
3	WL-17-9	Lockwasher – TW107 .....	1
4	BB-9-13	Ball Bearing (MRC-5207KFFG) .....	1
5	106888-1	Shim – Planetary Shaft (0.141 Thk.) .....	AR
6	106888-2	Shim – Planetary Shaft (0.144 Thk.) .....	AR

**TRANSMISSION GEAR UNIT (Cont.)  
(M802 SERIES)**

ILLUS. PL-55707	PART NO.	NAME OF PART	AMT.
7	106888-3	Shim – Planetary Shaft (0.147 Thk.) .....	AR
8	106888-4	Shim – Planetary Shaft (0.150 Thk.) .....	AR
9	106888-5	Shim – Planetary Shaft (0.153 Thk.) .....	AR
10	106888-6	Shim – Planetary Shaft (0.156 Thk.) .....	AR
11	106888-7	Shim – Planetary Shaft (0.159 Thk.) .....	AR
12	106888-9	Shim – Planetary Shaft (0.165 Thk.) .....	AR
13	106888-11	Shim – Planetary Shaft (0.171 Thk.) .....	AR
14	12430-215	Key .....	1
15	24225	Gear – Upper Planetary Shaft (53T) .....	1
16	64710	Spacer – Planetary Shaft .....	1
17	12430-211	Key .....	1
18	64421-2	Gear – Cluster (33T) & (25T Bevel) (Use with Attachment Hub) .....	1
19	291603-2	Gear (33T) (Use W/O Attachment Hub) .....	1
20	67500-22	O-Ring .....	1
21	106889	Shaft – Planetary .....	1
22	64427	Chimney & Flange Assy. (Prior to 31-1241-981) .....	1
23	874373	Chimney .....	1
24	SC-14-75	Mach. Screw 1/4-20 x 7/16 Flat Hd. (Prior to 31-1241-981) .....	5
25	WL-9-8	Lockwasher 1/4 External Shakeproof (Prior to 31-1241-981) .....	5
26	64623	Gauge – Gasket for Chimney (Prior to 31-1241-981) .....	1
27	67500-102	O-Ring (Prior to 31-1241-981) .....	1
28	67500-142	O-Ring .....	1
29	64467	Spacer – Lower Bearing Upper .....	1
30	BB-7-7	Ball Bearing (MRC #211 S-ZZ) .....	1
31	64423	Carrier – Lower Bearing .....	1
32	64468	Space – Lower Bearing Lower .....	1
33	WL-3-48	Lockwasher 5/16 High Collar .....	6
34	SC-123-75	Cap Screw 5/16-18 x 3/4 Soc. Fil. Hd. .....	6
35	BR-2-14	Roller Bearing – Cup & Cone Assy. .....	1
36	64386	Sun Gear (23T) .....	1
37	12430-210	Key 5/16 x 5/16 x 1 3/8 .....	1
38	RR-4-14	Retaining Ring .....	1
39	BR-2-15	Roller Bearing – Cup & Cone Assy. .....	1
40	64982	Washer – Tongue .....	1
41	65275	Lock Nut – (Special) Bearing .....	1
42	WL-3-15	Lockwasher #8 Light .....	1
43	65277	Cap Screw – (Special) .....	1
44	RR-5-4	Retaining Ring (Spirolox) .....	1
45	BB-18-21	Ball Bearing (Fafnir #305KD) .....	1
46	74222	Spacer – Clutch Shaft (Lower) .....	1
47	24539	Lower Clutch & Lower Gear Assy. (49T) .....	1
48	24213	Clutch – Shifting .....	1
49	RR-5-14	Retaining Ring .....	1
50	60767	Washer – Clutch Shaft .....	1
51	24538	Lower Clutch & Upper Gear Assy. (41T) .....	1
52	24209	Shaft – Clutch .....	1
53	24216	Washer – Clutch Shaft .....	1
54	64698	Upper Clutch Lower Gear Assy. (35T) .....	1
55	RR-4-13	Retaining Ring .....	1
56	24213	Clutch – Shifting .....	1
57	24545	Upper Clutch & Upper Gear Assy. (17T) .....	1
58	24210	Spacer – Clutch Shaft .....	1
59	RR-4-7	Retaining Ring .....	1
60	BB-6-1	Ball Bearing (N.D. #3304) .....	1
61	121382	Gear – Lower Worm Shaft (17T) .....	1
62	24206	Spacer – Worm Gear Shaft .....	1
63	120937	Key – (Special) .....	1
64	24207	Gear – Upper Worm Shaft (25T) .....	1
65	64670	Key – (Special) .....	1
66	74221	Shaft – Main Drive .....	1
67	BB-7-46	Ball Bearing (N.D. #7506) .....	1



**TRANSMISSION GEAR UNIT  
(V1401 SERIES)**

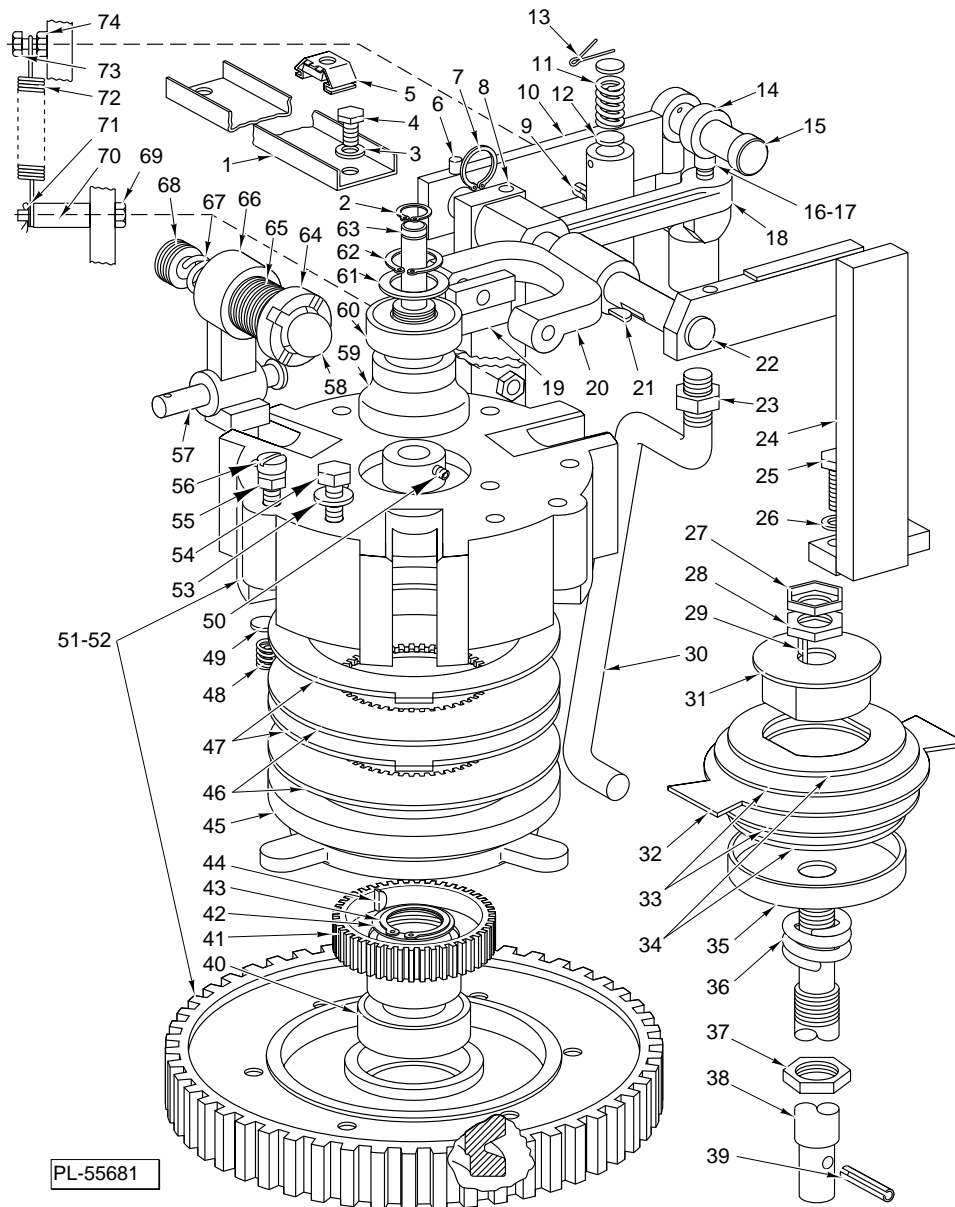
ILLUS.	PART NO.	NAME OF PART	AMT.
PL-55686			
1	NS-34-8	Lock Nut – N.D. #N-07 .....	1
2	WL-17-9	Lockwasher – TW107 .....	1
3	BB-9-13	Ball Bearing (MRC-5207KFFG) .....	1
4	106888-1	Shim – Planetary Shaft (0.141 Thk.) .....	AR
5	106888-2	Shim – Planetary Shaft (0.144 Thk.) .....	AR
6	106888-3	Shim – Planetary Shaft (0.147 Thk.) .....	AR



**TRANSMISSION GEAR UNIT (Cont.)  
(V1401 SERIES)**

ILLUS.	PART NO.	NAME OF PART	AMT.
PL-55686			
7	106888-4	Shim – Planetary Shaft (0.150 Thk.)	AR
8	106888-5	Shim – Planetary Shaft (0.153 Thk.)	AR
9	106888-6	Shim – Planetary Shaft (0.156 Thk.)	AR
10	106888-7	Shim – Planetary Shaft (0.159 Thk.)	AR
11	106888-9	Shim – Planetary Shaft (0.165 Thk.)	AR
12	106888-11	Shim – Planetary Shaft (0.171 Thk.)	AR
13	12430-215	Key	1
14	24225	Gear – Upper Planetary Shaft (53T)	1
15	67891	Spacer – Planetary Shaft	1
16	12430-209	Key	1
17	67894-2	Gear – Cluster (33T) & (25T) (Use with Attachment Hub)	1
18	291607-2	Gear (33T) (Use W/O Attachment Hub)	1
19	67500-118	O-Ring	1
20	106890	Shaft – Planetary	1
21	67897	Chimney & Flange Assy.	1
22	SC-14-75	Mach. Screw 1/4-20 x 7/16 Flat Hd.	5
23	WL-9-8	Lockwasher 1/4 External Shakeproof	5
24	67500-102	O-Ring	1
25	67900	Spacer – Lower Bearing Upper	1
26	BB-8-32	Ball Bearing (MRC #212-MFZ)	1
27	67896	Carrier – Lower Bearing	1
28	67901	Spacer – Lower Bearing Lower	1
29	WL-3-48	Lockwasher 5/16 High Collar	6
30	SC-123-75	Cap Screw 5/16-18 x 3/4 Soc. Fil. Hd.	6
31	BR-2-31	Roller Bearing – Cup & Cone Assy.	1
32	67804	Sun Gear (23T)	1
33	12430-161	Key – Sun Gear	1
34	RR-11-96	Retaining Ring	1
35	BR-2-15	Roller Bearing – Cup & Cone Assy.	1
36	64982	Washer – Tongue	1
37	65275	Lock Nut – (Special) Bearing	1
38	WL-3-15	Lockwasher #8 Light	1
39	65277	Cap Screw – (Special)	1
40	BB-8-30	Ball Bearing (Fafnir #205W)	1
41	24210	Spacer – Clutch Shaft	1
42	24545	Upper Clutch & Upper Gear Assy. (17T)	1
43	24213	Clutch – Shifting	1
44	RR-4-13	Retaining Ring (Truarc)	1
45	64698	Upper Clutch Lower Gear Assy. (35T)	1
46	024216	Washer – Clutch Shaft	1
47	24209	Shaft – Clutch	1
48	24538	Lower Clutch & Upper Gear Assy. (41T)	1
49	60767	Washer – Clutch Shaft	1
50	RR-5-14	Retaining Ring	1
51	24213	Clutch – Shifting	1
52	24539	Lower Clutch & Lower Gear Assy. (49T)	1
53	74222	Spacer – Clutch Shaft (Lower)	1
54	BB-18-22	Ball Bearing (Fafnir #7305W)	1
55	RR-5-4	Retaining Ring (Spirolox)	1
56	BB-7-46	Ball Bearing (N.D. #7506)	1
57	74221	Shaft – Main Drive	1
58	64670	Key – (Special)	1
59	24207	Gear – Upper Worm Shaft (25T)	1
60	120937	Key – (Special)	1
61	24206	Spacer – Worm Gear Shaft	1
62	121382	Gear – Lower Worm Shaft (17T)	1
63	BB-10-16	Ball Bearing (NTN #5304)	1
64	RR-4-7	Retaining Ring	1
65	68227	Gauge – Gasket Chimney	1

MODELS M802 & V1401 SERIES MIXERS REPLACEMENT PARTS



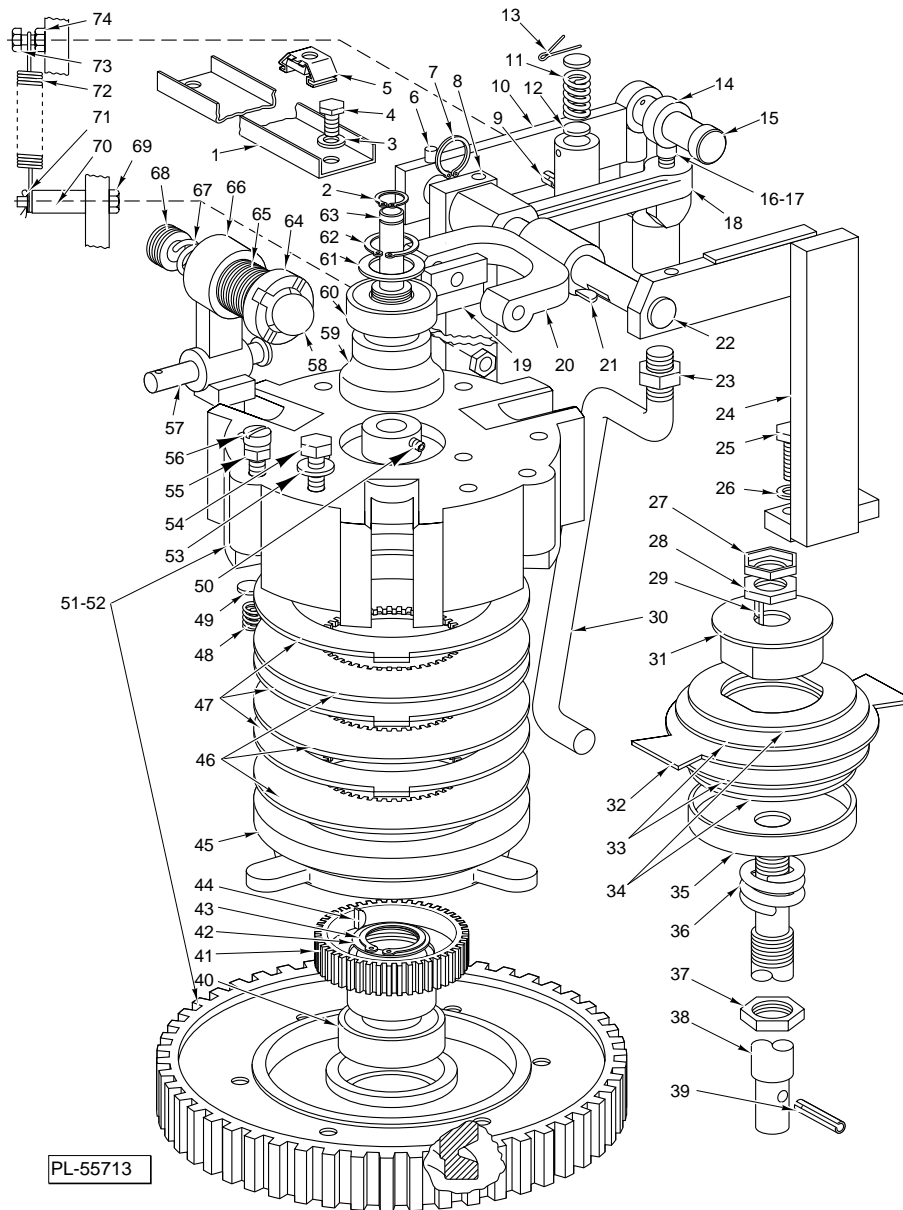
**CLUTCH AND BRAKE UNIT  
(M802 SERIES)**

ILLUS.	PART NO.	NAME OF PART	AMT.
PL-55681			
1	64528	Channel – Top Anchoring .....	1
2	RR-4-17	Retaining Ring .....	1
3	WL-3-36	Lockwasher 1/4 Light .....	2
4	SC-62-20	Cap Screw 1/4-20 x 3/8 Hex Hd. ....	2
5	64652	Nut – (Special) .....	1
6	PS-4-15	Spiral Pin 1/4 Dia. x 1 1/8 Lg. ....	1
7	RR-4-18	Retaining Ring .....	2
8	64526	Clutch Shaft Support Assy. (RH) .....	1
9	PS-4-15	Spiral Pin 1/4 Dia. x 1 1/8 Lg. ....	1
10	103654	Bracket and Clutch Arm Assy. (Incls. Item 9) .....	1
11	7433-1	Spring – Brake Arm .....	1
12	11352	Disc – Spring .....	2
13	PC-3-38	Cotter Pin 3/32 x 1 1/4 .....	1
14	00-479027	Clevis – Clutch Rod .....	1

**CLUTCH AND BRAKE UNIT (Cont.)  
(M802 SERIES)**

ILLUS. PL-55681	PART NO.	NAME OF PART	AMT.
15	00-479032	Pin – Clevis .....	1
16	SC-40-22	Cap Screw <sup>3</sup> / <sub>8</sub> -16 x 1 Soc. Hd. ....	1
17	NS-13-22	Nut <sup>3</sup> / <sub>8</sub> -16 Hex .....	1
18	68529	Brake Arm Assy. (Incls. Items 16 & 17) .....	1
19	103655	Clutch Bearing Retainer Assy. ....	2
20	64532	Yoke – Clutch Shifting .....	1
21	12430-48	Key <sup>3</sup> / <sub>16</sub> Sq. x <sup>3</sup> / <sub>4</sub> Lg. ....	1
22	00-439316	Shaft – Clutch .....	1
23	NS-13-35	Nut <sup>1</sup> / <sub>2</sub> -20 Hex .....	1
24	64527	Clutch Shaft Support Assy. (LH) .....	1
25	SC-120-38	Cap Screw <sup>5</sup> / <sub>16</sub> -18 x 1 Hex Hd. ....	4
26	WL-3-44	Lockwasher <sup>5</sup> / <sub>16</sub> Medium .....	4
27	NS-35-21	Special Nut <sup>5</sup> / <sub>8</sub> -18 Palnut .....	1
28	NS-17-40	Jam Nut <sup>5</sup> / <sub>8</sub> -18 Hex .....	1
29	12430-24	Key .....	1
30	00-479025	Rod – Clutch .....	1
31	64479	Hub – Brake .....	1
32	64482	Plate – Engaging .....	1
33	64480	Washer – Friction .....	2
34	22489	Disc – Friction .....	2
35	64481	Plate – Pressure .....	1
36	10107	Spring – Brake .....	1
37	NS-17-49	Jam Nut <sup>3</sup> / <sub>4</sub> -16 Hex .....	1
38	64483	Shaft – Brake .....	1
39	RP-2-27	Roll Pin <sup>5</sup> / <sub>16</sub> x 1 Lg. ....	1
40	BB-15-8	Ball Bearing (MRC 105KSZZ-01-ST-A-92-C) .....	3
41	64434	Hub – Spline .....	1
42	WS-13-44	Washer – Shim .....	2
43	RR-4-9	Retaining Ring .....	1
44	64670	Key (Special) .....	1
45	64429-1	Plate – Pressure .....	1
46	873117	Disc – Inner .....	2
47	64432	Disc – Outer .....	2
48	18046	Spring – Release .....	3
49	11352	Disc – Spring .....	3
50	SC-64-3	Set Screw <sup>1</sup> / <sub>4</sub> -28 x <sup>1</sup> / <sub>4</sub> Soc. Hds., Cup Pt. Nylc .....	1
51	110702	Driven Gear (54T) & Clutch Arm Plate (60 Hz.) (Incls. Items 53 & 54) .....	1
52	110700	Driven Gear (51T) & Clutch Arm Plate (50 Hz.) (Incls. Items 53 & 54) .....	1
53	WL-3-44	Lockwasher <sup>5</sup> / <sub>16</sub> Medium .....	6
54	SC-37-96	Cap Screw <sup>5</sup> / <sub>16</sub> -18 x 2 <sup>3</sup> / <sub>4</sub> Hex Hd. ....	6
55	NS-17-8	Jam Nut <sup>5</sup> / <sub>16</sub> -18 Hex .....	3
56	SC-12-02	Mach. Screw <sup>5</sup> / <sub>16</sub> -18 x 1 <sup>1</sup> / <sub>2</sub> Fil. Hd. ....	3
57	00-478789	Pin – Clutch Arm Pivot .....	3
58	BA-2-23	Ball <sup>1</sup> / <sub>2</sub> Dia. ....	3
59	64529	Cam – Clutch Operating .....	1
60	BB-15-3	Ball Bearing (N.D. #773LO4) .....	1
61	WS-12-41	Washer .....	1
62	RR-4-7	Retaining Ring .....	1
63	72558	Post – Guide .....	1
64	7344	Lock Nut .....	3
65	103652	Clutch Spring Screw Assy. (Incls. Items 58, 64, 66, 67, & 68) .....	3
66	64430	Arm – Clutch .....	3
67	8827	Spring – Ball Operating .....	3
68	7343	Screw – Hollow .....	3
69	NS-17-6	Jam Nut <sup>5</sup> / <sub>16</sub> -18 Hex .....	1
70	65122	Stud – Spring Mounting .....	1
71	WS-3-20	Washer .....	1
72	65084-3	Spring – Clutch Linkage .....	1
73	SC-36-4	Cap Screw <sup>1</sup> / <sub>4</sub> -20 x <sup>3</sup> / <sub>4</sub> Hex Hd. ....	1
74	NS-13-1	Nut <sup>1</sup> / <sub>4</sub> -20 Hex .....	1
	110708-1	Clutch Assy. ....	1
	103653	Clutch Control Assy. ....	1
	103650	Brake Shaft Assy. ....	1

MODELS M802 & V1401 SERIES MIXERS REPLACEMENT PARTS



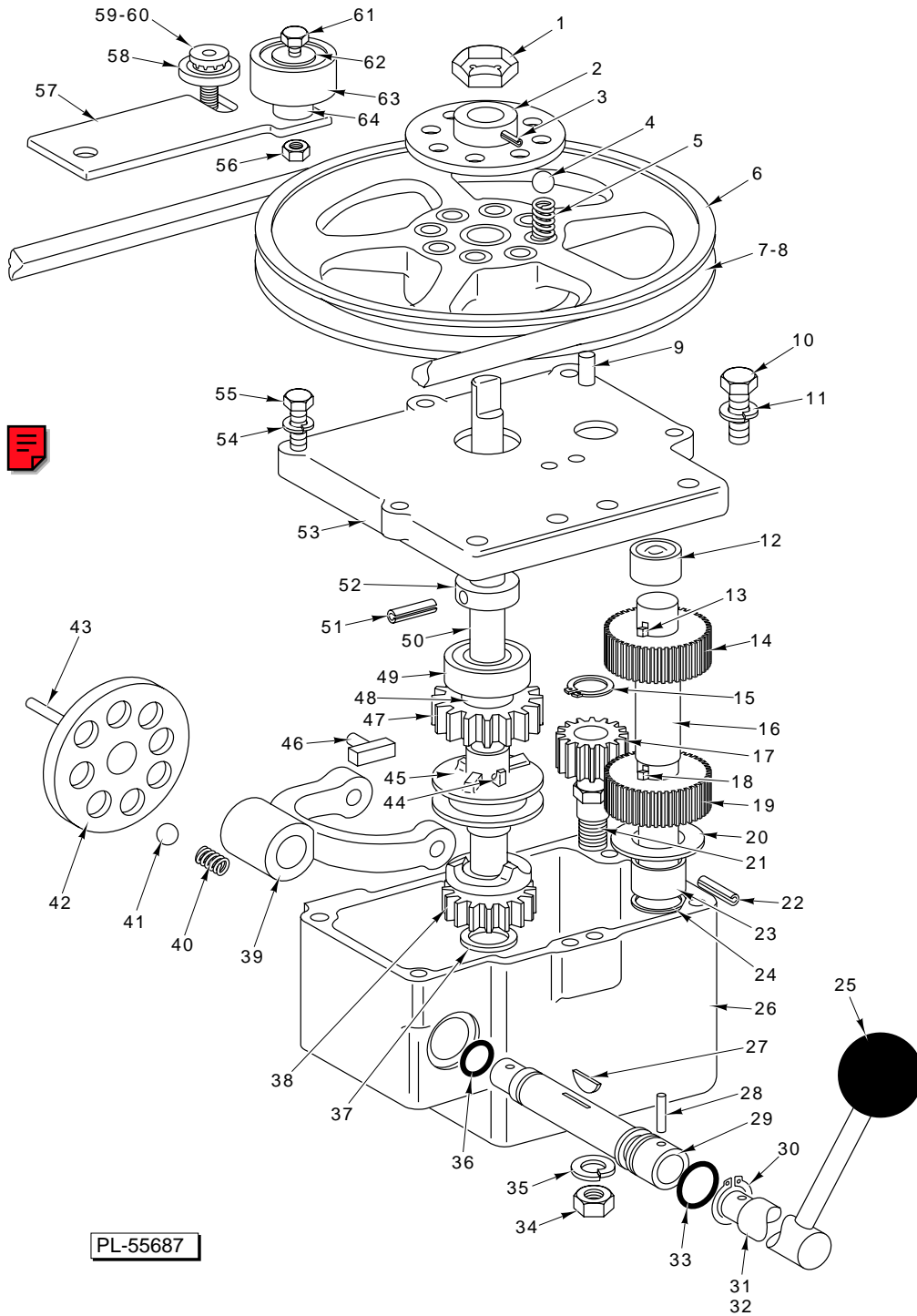
**CLUTCH AND BRAKE UNIT  
(V1401 SERIES)**

ILLUS.	PART NO.	NAME OF PART	AMT.
	PL-55713		
1	64528	Channel – Top Anchoring .....	1
2	RR-4-17	Retaining Ring .....	1
3	WL-3-36	Lockwasher 1/4 Light .....	2
4	SC-62-20	Cap Screw 1/4-20 x 3/8 Hex Hd. ....	2
5	64652	Nut – (Special) .....	1
6	PS-4-15	Spiral Pin 1/4 Dia. x 1 1/8 Lg. ....	1
7	RR-4-18	Retaining Ring .....	2
8	64526	Clutch Shaft Support Assy. (RH) .....	1
9	PS-4-15	Spiral Pin 1/4 Dia. x 1 1/8 Lg. ....	1
10	103654	Bracket and Clutch Arm Assy. (Incls. Item 9) .....	1
11	7433-1	Spring – Brake Arm .....	1
12	11352	Disc – Spring .....	2
13	PC-3-38	Cotter Pin 3/32 x 1 1/4 .....	1
14	479027	Clevis – Clutch Rod .....	1

**CLUTCH AND BRAKE UNIT (Cont.)  
(V1401 SERIES)**

ILLUS. PL-55713	PART NO.	NAME OF PART	AMT.
15	479032	Pin – Clevis .....	1
16	SC-40-22	Cap Screw <sup>3</sup> / <sub>8</sub> -16 x 1 Soc. Hd. ....	1
17	NS-13-22	Nut <sup>3</sup> / <sub>8</sub> -16 Hex .....	1
18	68529	Brake Arm Assy. (Incls. Items 16 & 17) .....	1
19	103655	Clutch Bearing Retainer Assy. ....	2
20	64532	Yoke – Clutch Shifting .....	1
21	12430-48	Key <sup>3</sup> / <sub>16</sub> Sq. x <sup>3</sup> / <sub>4</sub> Lg. ....	1
22	439316	Shaft – Clutch .....	1
23	NS-13-35	Nut <sup>1</sup> / <sub>2</sub> -20 Hex .....	1
24	64527	Clutch Shaft Support Assy. (LH) .....	1
25	SC-120-38	Cap Screw <sup>5</sup> / <sub>16</sub> -18 x 1 Hex Hd. ....	4
26	WL-3-44	Lockwasher <sup>5</sup> / <sub>16</sub> Medium .....	4
27	NS-35-21	Special Nut <sup>5</sup> / <sub>8</sub> -18 Palnut .....	1
28	NS-17-40	Jam Nut <sup>5</sup> / <sub>8</sub> -18 Hex .....	1
29	12430-24	Key .....	1
30	00-479025	Rod – Clutch .....	1
31	64479	Hub – Brake .....	1
32	64482	Plate – Engaging .....	1
33	64480	Washer – Friction .....	2
34	22489	Disc – Friction .....	2
35	64481	Plate – Pressure .....	1
36	10107	Spring – Brake .....	1
37	NS-17-49	Jam Nut <sup>3</sup> / <sub>4</sub> -16 Hex .....	1
38	64483	Shaft – Brake .....	1
39	RP-2-27	Roll Pin <sup>5</sup> / <sub>16</sub> x 1 Lg. ....	1
40	BB-15-8	Ball Bearing (MRC 105KSZZ-01-ST-A-92-C) .....	3
41	64434	Hub – Spline .....	1
42	WS-13-44	Washer – Shim .....	2
43	RR-4-9	Retaining Ring .....	1
44	64670	Key (Special) .....	1
45	64429-2	Plate – Pressure .....	1
46	00-873117	Disc – Inner .....	2
47	64432	Disc – Outer .....	2
48	18046	Spring – Release .....	3
49	11352	Disc – Spring .....	3
50	SC-64-3	Set Screw <sup>1</sup> / <sub>4</sub> -28 x <sup>1</sup> / <sub>4</sub> Soc. Hdls., Cup Pt. Nyloc .....	1
51	110706	Driven Gear (54T) & Clutch Arm Plate (60 Hz.) (Incls. Items 53 & 54) .....	1
52	110704	Driven Gear (51T) & Clutch Arm Plate (50 Hz.) (Incls. Items 53 & 54) .....	1
53	WL-3-44	Lockwasher <sup>5</sup> / <sub>16</sub> Medium .....	6
54	SC-37-96	Cap Screw <sup>5</sup> / <sub>16</sub> -18 x 2 <sup>3</sup> / <sub>4</sub> Hex Hd. ....	6
55	NS-17-8	Jam Nut <sup>5</sup> / <sub>16</sub> -18 Hex .....	3
56	SC-12-2	Mach. Screw <sup>5</sup> / <sub>16</sub> -18 x 1 <sup>1</sup> / <sub>2</sub> Fil. Hd. ....	3
57	00-478789	Pin – Clutch Arm Pivot .....	3
58	BA-2-23	Ball <sup>1</sup> / <sub>2</sub> Dia. ....	3
59	64529	Cam – Clutch Operating .....	1
60	BB-15-3	Ball Bearing (N.D. #773LO4) .....	1
61	WS-12-41	Washer .....	1
62	RR-4-7	Retaining Ring .....	1
63	72558	Post – Guide .....	1
64	7344	Lock Nut .....	3
65	103652	Clutch Spring Screw Assy. (Incls. Items 58, 64, 66, 67, & 68) .....	3
66	64430	Arm – Clutch .....	3
67	8827	Spring – Ball Operating .....	3
68	7343	Screw – Hollow .....	3
69	NS-17-6	Jam Nut <sup>5</sup> / <sub>16</sub> -18 Hex .....	1
70	65122	Stud – Spring Mounting .....	1
71	WS-3-20	Washer .....	1
72	65084-3	Spring – Clutch Linkage .....	1
73	SC-36-4	Cap Screw <sup>1</sup> / <sub>4</sub> -20 x <sup>3</sup> / <sub>4</sub> Hex Hd. ....	1
74	NS-13-1	Nut <sup>1</sup> / <sub>4</sub> -20 Hex .....	1
	110708-3	Clutch Assy. ....	1
	103653	Clutch Control Assy. ....	1
	103650	Brake Shift Assy. ....	1

MODELS M802 & V1401 SERIES MIXERS REPLACEMENT PARTS

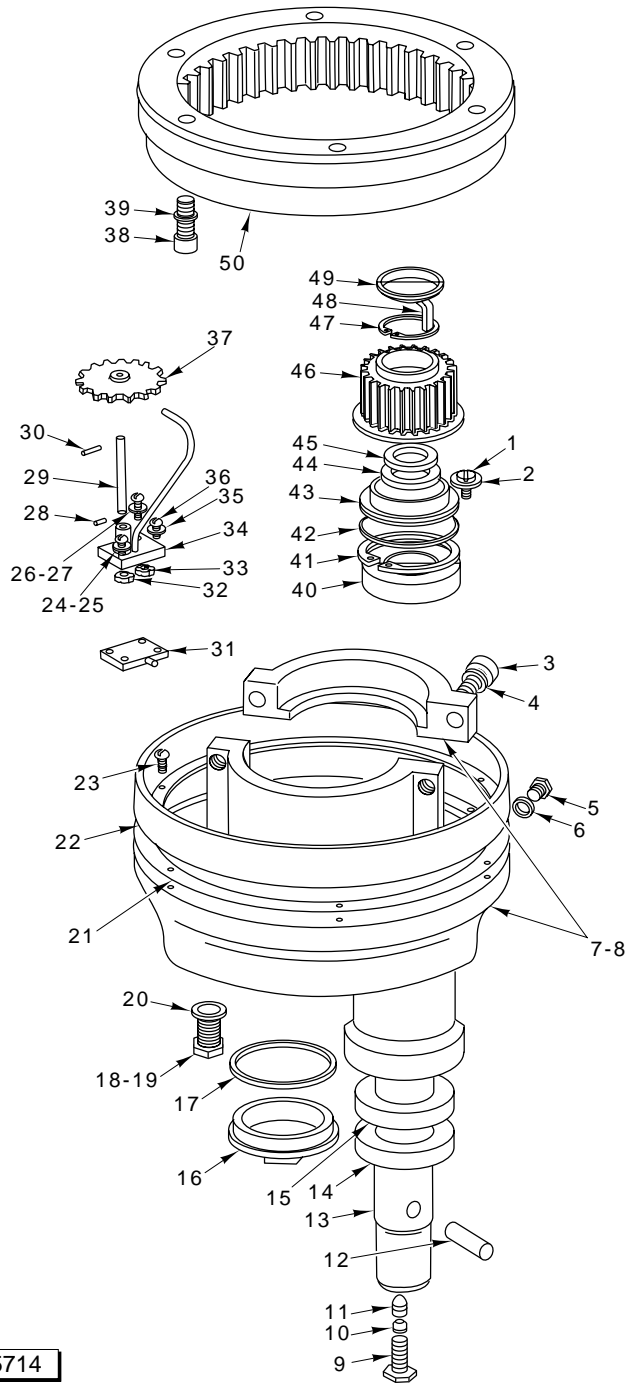


**POWER BOWL LIFT UNIT**

ILLUS.	PART NO.	NAME OF PART	AMT.
	PL-55687		
1	NS-35-17	Special Nut $\frac{9}{16}$ -18 Palnut .....	1
2	67915	Hub & Detent Plate Assy. ....	1
3	PS-4-9	Spiral Pin $\frac{3}{16}$ Dia. x 1 Lg. ....	1
4	BA-2-18	Ball $\frac{3}{8}$ Dia. ....	8

**POWER BOWL LIFT UNIT (Cont.)**

ILLUS.	PART NO.	NAME OF PART	AMT.
	<b>PL-55687</b>		
5	64616	Spring – Slip Clutch Detent.....	8
6	00-479663	V-Pulley & Bushing Assy. ....	1
7	BV-13-18	V-Belt (ML-104687, ML-104694, & ML-104696).....	1
8	BV-13-17	V-Belt (ML-104674, ML-104686, & ML-104683).....	1
9	11800-90	Dowel.....	2
10	SC-118-10	Cap Screw <sup>3</sup> / <sub>8</sub> -16 x 1 Hex Hd. ....	2
11	WL-19-92	Lockwasher <sup>3</sup> / <sub>8</sub> Light.....	2
12	BN-2-9	Needle Bearing – Torrington (#M-1081).....	1
13	KW-3-3	Key – Woodruff <sup>1</sup> / <sub>8</sub> x <sup>1</sup> / <sub>2</sub> Lg. ....	1
14	12699	Gear – Output (23T).....	1
15	RR-4-17	Retaining Ring.....	1
16	64400	Shaft – Output.....	1
17	64726	Idler Gear Assy. (15T).....	1
18	KW-3-3	Key – Woodruff <sup>1</sup> / <sub>8</sub> x <sup>1</sup> / <sub>2</sub> Lg. ....	1
19	12699	Gear – Output (23T).....	1
20	120407	Washer.....	1
21	64523	Stud – Idler.....	1
22	PS-4-15	Spiral Pin <sup>1</sup> / <sub>4</sub> Dia. x 1 <sup>1</sup> / <sub>8</sub> Lg. ....	1
23	BN-2-8	Needle Bearing – Torrington (#B-108).....	1
24	64643	Oil Seal – Bowl Lift.....	1
25	60468	Knob – Gear Shift.....	1
26	64395	Gear Box – Bowl Lift.....	1
27	12430-48	Key <sup>3</sup> / <sub>16</sub> Sq. x <sup>3</sup> / <sub>4</sub> Lg. ....	AR
28	PS-5-13	Spiral Pin <sup>3</sup> / <sub>16</sub> Dia. x <sup>7</sup> / <sub>8</sub> Lg. ....	1
29	065567	Shaft – Yoke.....	1
30	RR-4-6	Retaining Ring.....	1
31	64727-1	Lift Control Shaft & Handle Assy. (Painted).....	1
32	64727-4	Lift Control Shaft & Handle Assy. (Chrome Plated).....	1
33	67500-7	O-Ring.....	1
34	NS-17-27	Jam Nut <sup>1</sup> / <sub>2</sub> -13 Hex.....	1
35	WL-4-13	Lockwasher <sup>1</sup> / <sub>2</sub> Medium.....	1
36	67500-5	O-Ring.....	1
37	64641	Bearing – Gear Box.....	1
38	103642-2	Lower Clutch Gear & Bearing Assy. (20T).....	1
39	64410	Yoke – Reversing.....	1
40	7009	Spring – Detent (6 Lb.).....	2
41	BA-2-18	Ball <sup>3</sup> / <sub>8</sub> Dia. ....	2
42	67915	Hub & Detent Plate.....	1
43	PS-4-9	Spiral Pin <sup>3</sup> / <sub>16</sub> Dia. x 1 Lg. ....	1
44	64670	Key – (Special).....	1
45	477072	Clutch.....	1
46	64403	Shoe – Clutch.....	2
47	103641-2	Upper Clutch Gear & Bearing Assy. (25T).....	1
48	WS-9-38	Washer.....	1
49	BB-5-19	Ball Bearing (Fafnir #H202PP).....	1
50	00-438001	Shaft – Input.....	1
51	RP-2-25	Roll Pin <sup>1</sup> / <sub>8</sub> Dia. x <sup>7</sup> / <sub>8</sub> Lg. ....	1
52	64405	Collar – Input Shaft.....	1
53	291045	Cover – Gear Box.....	1
54	WL-3-37	Lockwasher <sup>1</sup> / <sub>4</sub> Medium.....	6
55	SC-118-18	Cap Screw <sup>1</sup> / <sub>4</sub> -20 x <sup>7</sup> / <sub>8</sub> Hex Hd. ....	6
56	NS-13-11	Nut <sup>5</sup> / <sub>16</sub> -18 Hex.....	1
57	64508	Plate – Belt Tightener Mounting.....	1
58	68839	Washer – Belt Tightener.....	1
59	SC-61-4	Cap Screw <sup>5</sup> / <sub>16</sub> -18 x 1 Soc. Flat Hd. ....	1
60	WL-9-14	Lockwasher <sup>5</sup> / <sub>16</sub> External Shakeproof.....	1
61	64507	Special Screw.....	1
62	WS-4-20	Washer.....	1
63	122101	Belt Tightener Assy. ....	1
64	111669	Bushing – Belt Tightener.....	1
	64927-3	Power Bowl Lift Assy. (Incls. Items 9 thru 29, 33, & 55)	



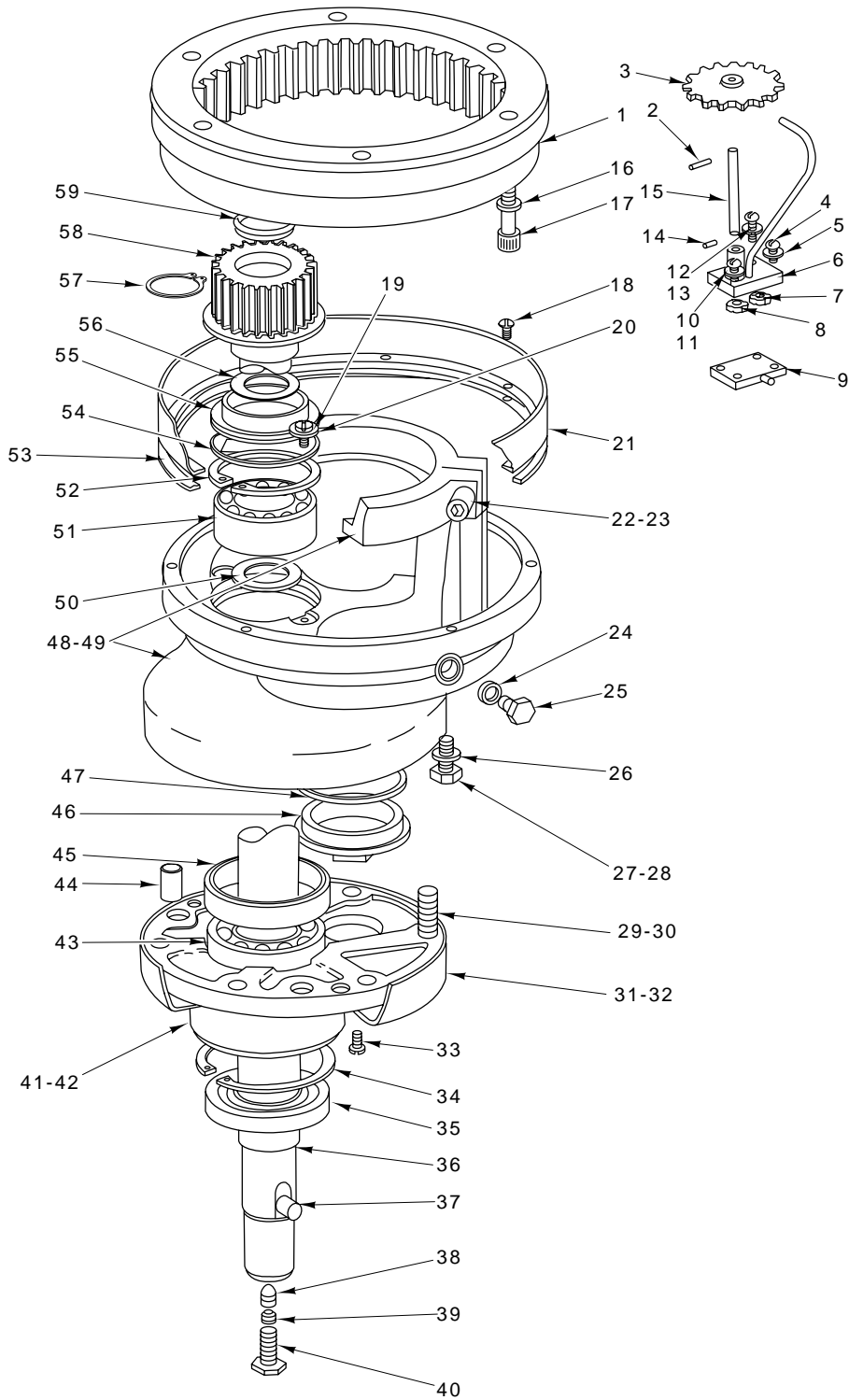
PL-55714

**PLANETARY UNIT  
(M802 SERIES)**



**PLANETARY UNIT  
(M802 SERIES)**

ILLUS. PL-55714	PART NO.	NAME OF PART	AMT.
1	SC-11-72	Mach. Screw 1/4-20 x 3/8 Fil. Hd. ....	2
2	WS-3-46	Washer .....	2
3	SC-87-45	Cap Screw 1/2-13 x 1 1/2 Soc. Fil. Hd. ....	2
4	WL-19-93	Lockwasher 1/2 High Collar .....	2
5	64465-3	Plug – Oil Fill .....	1
6	WS-21-20	Washer .....	1
7	103645-1	Planetary & Bearing Cap Assy. (Painted) (Incls. Items 3 & 4) .....	1
8	103645-3	Planetary & Bearing Cap Assy. (Deluxe) (Incls. Items 3 & 4) .....	1
9	64723	Screw – Agitator Shaft .....	1
10	SC-47-41	Set Screw 3/8-16 x 3/8 Soc. Hdls., Cup Pt. ....	1
11	7744	Set Screw – Hdls., Cone Pt. ....	1
12	65717	Pin – Agitator Shaft .....	1
13	65749	Agitator Shaft Assy. (Incls. Items 9 thru 12) .....	1
14	24651	Seal – Planetary .....	1
15	BB-7-39	Ball Bearing (M.R.C. #207-SZZ) .....	1
16	00-437496-4	Cap – Seal (Painted) .....	1
17	67500-21	O-Ring .....	1
18	SC-37-23	Cap Screw 1/2-20 x 1 Hex Hd. (Painted) (Drain Plug for Planetary) .....	1
19	SC-37-26	Cap Screw 1/2-20 x 1 Hex Hd. (Deluxe) (Drain Plug for Planetary) .....	1
20	WS-21-21	Washer .....	1
21	64464	Gasket – Planetary .....	1
22	64478	Extension – Planetary .....	1
23	SC-9-70	Mach. Screw 6-32 x 1/4 Rd. Hd. ....	8
24	SC-60-87	Mach. Screw 10-32 x 3/4 Rd. Hd. ....	1
25	WL-3-22	Lockwasher #10 Light .....	1
26	SC-9-68	Mach. Screw 8-32 x 3/4 Rd. Hd. ....	1
27	WL-3-15	Lockwasher #8 Light .....	1
28	538772	Dowel 3/32 Dia. x 1 1/32 Lg. ....	1
29	186272	Shaft – Oil Pump .....	1
30	RP-2-8	Roll Pin 5/64 Dia. x 1 1/16 Lg. ....	1
31	64844	Bottom Plate Planetary Oil Pump Assy. ....	1
32	186270	Gear – Oil Pump (15T) (Slotted) .....	1
33	290277	Gear – Oil Pump (15T) (Slotted) .....	1
34	290232-1	Planetary Oil Pump Assy. ....	1
35	WL-3-22	Lockwasher #10 Light .....	2
36	SC-81-17	Mach. Screw 10-32 x 1 Rd. Hd. ....	2
37	64614	Drive Gear Assy. (15T) .....	1
38	SC-40-27	Cap Screw 3/8-16 x 2 1/4 Soc. Fil. Hd. ....	6
39	WL-19-92	Lockwasher 3/8 High Collar .....	6
40	BB-6-36	Ball Bearing (M.R.C. #306-SZZ) .....	1
41	RR-4-24	Retaining Ring .....	1
42	67500-21	O-Ring .....	1
43	73011	Baffle – Planetary Oil .....	1
44	65408	Spacer – Agitator Shaft .....	1
45	60768	Shim – Internal Pinion .....	AR
46	64732	Internal Pinion & Deflector Assy. (18T) .....	1
47	RR-5-8	Retaining Ring .....	1
48	74288	Key – Internal Pinion .....	1
49	60071	Cap – Oil Retaining .....	1
50	00-438121	Gear – Internal (59T) .....	1
	290232-1	Planetary Oil Pump Assy. (Painted) (Incls. Items 24 thru 34 & 37) .....	1
	104532-1	Planetary (Painted) (Incls. Items 1, 2, 3, 5, 6, 7, 13, 14, 15, 18, 20, & 40 thru 49) .....	1

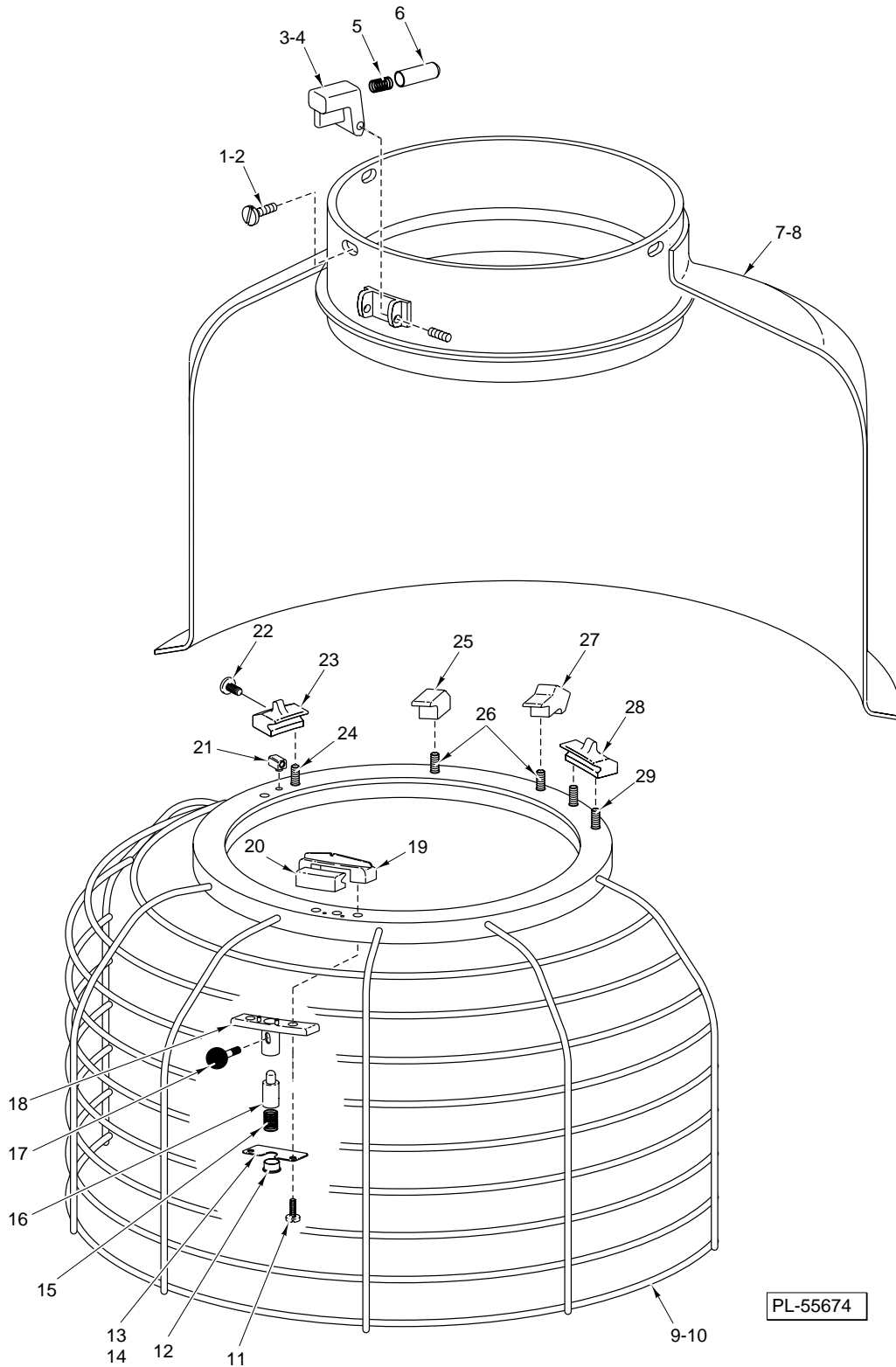


PL-55676

**PLANETARY UNIT  
(V1401 SERIES)**

**PLANETARY UNIT  
(V1401 SERIES)**

ILLUS. PL-55676	PART NO.	NAME OF PART	AMT.
1	00-438050	Gear – Internal .....	1
2	RP-2-8	Roll Pin <sup>5</sup> / <sub>64</sub> Dia. x <sup>11</sup> / <sub>16</sub> Lg. ....	1
3	64614	Drive Gear Assy. (15T) .....	1
4	SC-81-17	Mach. Screw 10-32 x 1 Rd. Hd. ....	2
5	WL-3-22	Lockwasher #10 Light .....	2
6	290232-1	Housing & Tubing Assy. ....	1
7	290277	Gear – Oil Pump (15T) (Slotted) .....	1
8	186270	Gear – Oil Pump (15T) (Slotted) .....	1
9	64844	Bottom Plate Planetary Oil Pump Assy. ....	1
10	SC-60-87	Mach. Screw 10-32 x <sup>3</sup> / <sub>4</sub> Rd. Hd. ....	1
11	WL-3-22	Lockwasher #10 Light .....	1
12	SC-9-68	Mach. Screw 8-32 x <sup>3</sup> / <sub>4</sub> Rd. Hd. ....	1
13	WL-3-15	Lockwasher #8 Light .....	1
14	538772	Dowel <sup>3</sup> / <sub>32</sub> Dia. x <sup>11</sup> / <sub>32</sub> Lg. ....	1
15	186272	Shaft – Oil Pump .....	1
16	WL-4-6	Lockwasher <sup>3</sup> / <sub>8</sub> High Collar .....	6
17	SC-40-28	Cap Screw <sup>3</sup> / <sub>8</sub> -16 x 2 <sup>1</sup> / <sub>2</sub> Soc. Fil. Hd. ....	6
18	SC-9-70	Mach. Screw 6-32 x <sup>1</sup> / <sub>4</sub> Rd. Hd. ....	8
19	SC-11-72	Mach. Screw <sup>1</sup> / <sub>4</sub> -20 x <sup>3</sup> / <sub>8</sub> Fil. Hd. ....	2
20	WS-3-46	Washer .....	2
21	64478	Extension – Planetary .....	1
22	SC-87-45	Cap Screw <sup>1</sup> / <sub>2</sub> -13 x 1 <sup>1</sup> / <sub>2</sub> Soc. Fil. Hd. ....	2
23	WL-19-93	Lockwasher <sup>1</sup> / <sub>2</sub> High Collar .....	2
24	WS-21-20	Washer .....	1
25	64465-3	Plug – Oil Fill .....	1
26	WS-21-21	Washer .....	1
27	SC-37-23	Cap Screw <sup>1</sup> / <sub>2</sub> -20 x 1 Hex Hd. (Painted) (Drain Plug for Planetary) .....	1
28	SC-37-26	Cap Screw <sup>1</sup> / <sub>2</sub> -20 x 1 Hex Hd. (Deluxe) (Drain Plug for Planetary) .....	1
29	SC-120-28	Cap Screw <sup>1</sup> / <sub>2</sub> -13 x 2 Hex Hd. ....	6
30	WL-4-13	Lockwasher <sup>1</sup> / <sub>2</sub> Medium .....	6
31	68041-2	Cover – Planetary Bearing Plate (Use on Machines With Bowl Scraper) .....	1
32	68041	Cover – Planetary Bearing Plate .....	1
33	80531	Screw – (Special) (Nylok) .....	2
34	RR-6-7	Retaining Ring .....	1
35	68045	Seal – Planetary .....	1
36	73821	Agitator Shaft Unit Assy. (Incls. Items 37 thru 40) .....	1
37	77757	Pin – Agitator Shaft .....	1
38	7744	Set Screw – Hdls., Cone Pt. ....	1
39	SC-47-41	Set Screw <sup>3</sup> / <sub>8</sub> -16 x <sup>3</sup> / <sub>8</sub> Soc. Hdls., Cup Pt. ....	1
40	64723	Screw – Agitator Shaft .....	1
41	67931-1	Plate – Bearing (Painting) .....	1
42	67921-3	Plate – Bearing (Deluxe) .....	1
43	BB-9-45	Ball Bearing (MRC #5210-KF) .....	1
44	11800-237	Dowel .....	2
45	67903	Locator – Bearing .....	1
46	00-437496-2	Cap – Seal (Painted) .....	1
47	67500-21	O-Ring .....	1
48	110360-1	Planetary & Bearing Cap Assy. (Painted) (Incls. Items 22 & 23) .....	1
49	110360-3	Planetary & Bearing Cap Assy. (Deluxe) (Incls. Items 22 & 23) .....	1
50	67902	Spacer – Agitator Shaft .....	1
51	BB-9-44	Ball Bearing (MRC #5207-KF) .....	1
52	RR-4-24	Retaining Ring .....	1
53	64464	Gasket – Planetary .....	1
54	67500-21	O-Ring .....	1
55	73011	Baffle – Planetary Oil .....	1
56	68277	Shim – Internal Pinion .....	AR
57	RR-6-8	Retaining Ring .....	1
58	67886	Internal Pinion & Oil Deflector Assy. (18T) .....	1
59	60071	Cap – Oil Retaining .....	1
	290232-2	Planetary Oil Pump Assy. (Incls. Items 2, 3, & 5 thru 15) .....	1
	89050-1	Planetary (Complete) (Painted) .....	1
	89050-2	Planetary (Complete) (Deluxe) .....	1

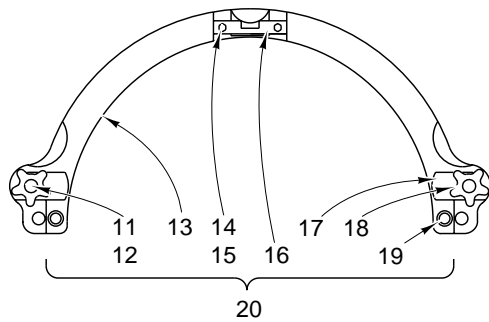
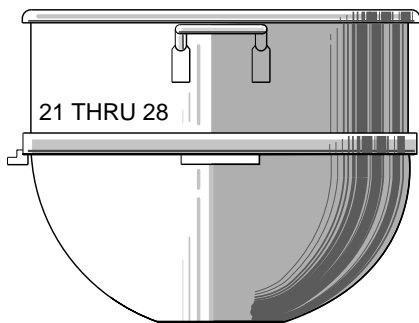
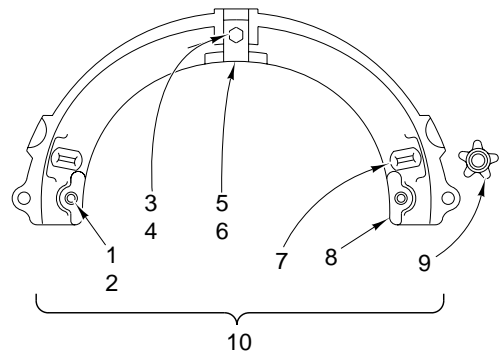
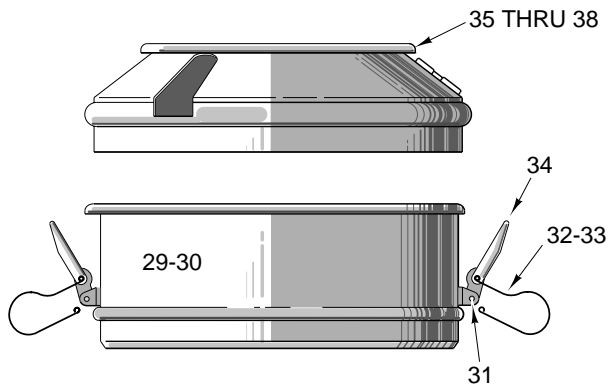


**BOWL GUARD UNIT**

**BOWL GUARD UNIT**

ILLUS. PL-55674	PART NO.	NAME OF PART	AMT.
1	SC-21-39	Mach. Screw 1/4-20 x 5/8 Rd. Hd. (ML-104687, ML-104694, & ML-104696)	3
2	SC-21-37	Mach. Screw 1/4-20 x 3/8 Rd. Hd. (ML-104674, ML-104686, & ML-104683)	3
3	00-479010	Latch – Cage Detent	1
4	00-479015	Set Screw (Special)	2
5	00-437446-1	Spring – Cage Detent	1
6	00-437445	Plunger – Drip Cup	1
7	00-438118	Splash Guard Assy. (ML-104687 & ML-104696) (Incls. Items 3 thru 6)	1
8	00-438044	Splash Guard Assy. (ML-104674, ML-104686, & ML-104683) (Incls. Items 3 thru 6)	1
9	00-438120	Wire Cage Assy. (ML-104687, ML-104694, & ML-104696) (Incls. Items 11 thru 13 & 15 thru 29)	1
10	00-438049	Wire Cage Assy. (ML-104674, ML-104686, & ML-104683) (Incls. Items 11, 12, & 14 thru 29)	1
11	SC-122-46	Mach. Screw 1/4-20 x 3/4 Truss Hd. (Special)	2
12	00-438053	Plug – Plunger Housing	1
13	00-437691	Stop – Cage (ML-104687, ML-104694, & ML-104696)	1
14	00-438126	Stop – Cage (ML-104674, ML-104686, & ML-104683)	1
15	00-437446-2	Spring – Cage On/Off	1
16	00-437432	Plunger	1
17	00-437436	Pin – Plunger	1
18	00-437447	Housing & Pin Assy.	1
19	00-437437-2	Saddle – Shoe	1
20	00-437433-1	Shoe – Saddle	1
21	00-437720	Key – Shoe	1
22	SC-122-44	Mach. Screw 8-32 x 3/8 Truss Hd. (Special)	1
23	00-437433-3	Shoe – Adjustable	1
24	SC-122-45	Mach. Screw 1/4-20 x 3/8 Truss Hd. (Special)	2
25	00-438055	Bumper – Cage	1
26	SC-122-44	Mach. Screw 8-32 x 3/8 Truss Hd. (Special)	2
27	00-437442	Retainer – Magnet	1
28	00-437433-2	Shoe – Fixed	1
29	SC-122-45	Mach. Screw 1/4-20 x 3/8 Truss Hd. (Special)	2



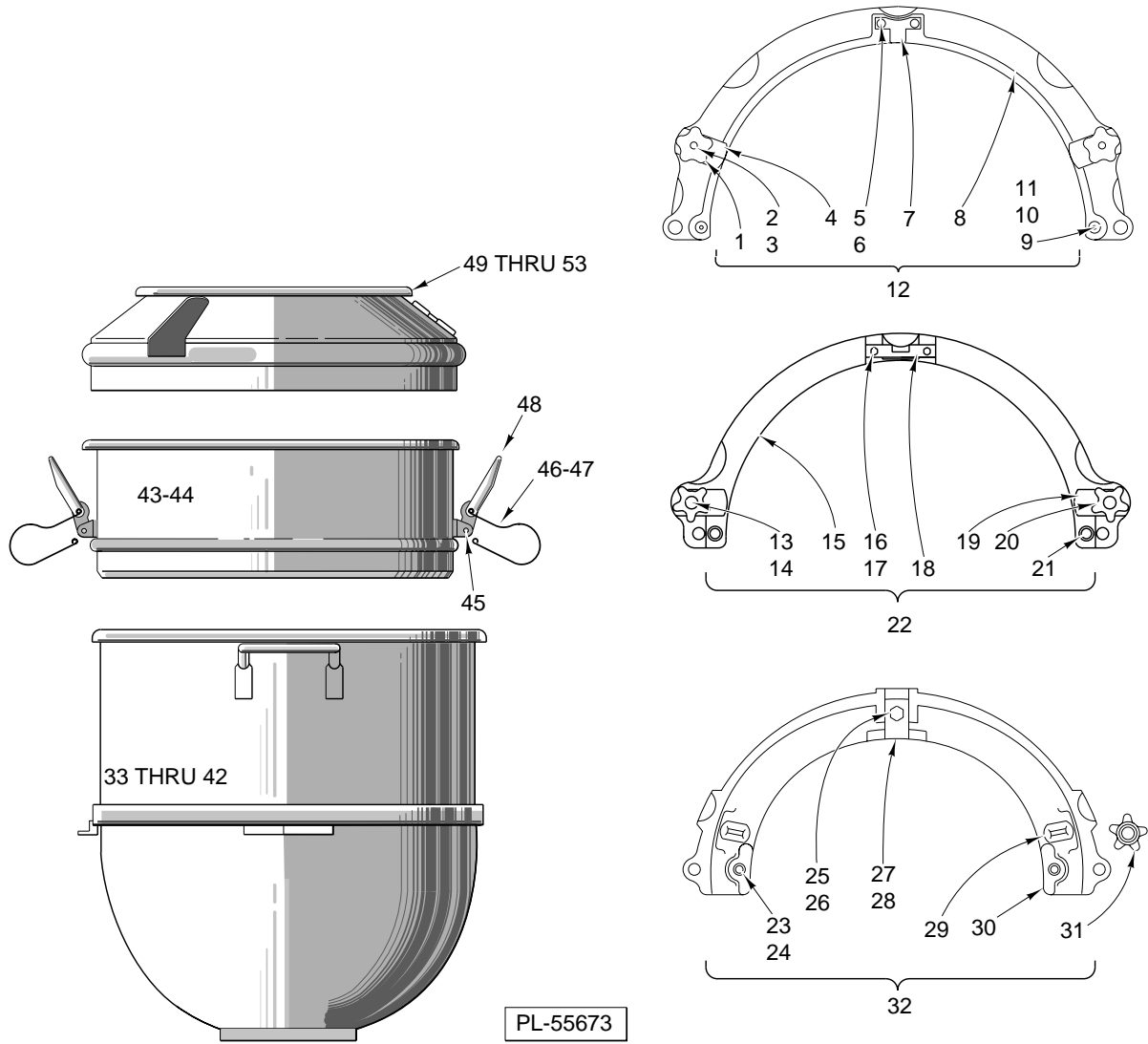


PL-55678

**BOWLS AND EQUIPMENT  
(M802 SERIES)**

**BOWLS AND EQUIPMENT  
(M802 SERIES)**

ILLUS. PL-55678	PART NO.	NAME OF PART	AMT.
1	WL-4-17	Lockwasher <sup>5</sup> / <sub>8</sub> Light .....	2
2	7629-2	Stud – Bowl Locating .....	2
3	SC-62-37	Cap Screw <sup>1</sup> / <sub>2</sub> -13 x 1 Hex Hd. ....	1
4	WL-4-11	Lockwasher <sup>1</sup> / <sub>2</sub> Light .....	1
5	7624-1	Retainer – Bowl.....	1
6	111671	Shim (0.010 Thk.) .....	AR
7	8100-1	Stud – Clamp .....	2
8	111165-1	Adapter (80-40 Qt. & 80-30 Qt.) (Painted) .....	1
9	111268-1	Knob – Clamp Stud (Painted) .....	2
10	24653-1	Bowl Adapter Assy. (Tinned) (80-30 Qt.) (Pkg.) (Incls. Items 1 thru 9) .....	1
11	22196	Bolt – Bowl Lock .....	2
12	WL-4-11	Lockwasher <sup>1</sup> / <sub>2</sub> Medium .....	2
13	65791-1	Adapter (80-60 Qt.) (Painted) .....	1
14	SC-37-88	Cap Screw <sup>5</sup> / <sub>16</sub> -18 x 1 <sup>1</sup> / <sub>2</sub> Hex Hd. ....	2
15	WL-3-47	Lockwasher <sup>5</sup> / <sub>16</sub> Medium .....	2
16	24289	Retainer – Bowl.....	1
17	65532-1	Clamp – Bowl Adapter (Painted).....	2
18	8101-1	Knob – Clamp Stud (Tinned) .....	2
19	24300	Pin – Bowl Locating .....	2
20	61033-1	Bowl Adapter Assy. (Tinned) (60-80 Qt.) (Pkg.) (Incls. Items 11 thru 19).....	1
21	275690	Bowl – 80 Qt. (SST) (Pkg.) .....	1
22	275689	Bowl – 80 Qt. (Tinned) (Pkg.) .....	1
23	275688	Bowl – 60 Qt. (SST) (Pkg.) .....	1
24	275687	Bowl – 60 Qt. (Tinned) (Pkg.) .....	1
25	275686	Bowl – 40 Qt. (SST) (Pkg.) .....	1
26	295650	Bowl – 40 Qt. (Tinned) (Pkg.) .....	1
27	295648	Bowl – 30 Qt. (SST) (Pkg.) .....	1
28	275684	Bowl – 30 Qt. (Tinned) (Pkg.) .....	1
29	00-438104-2	Extension – 80 Qt. Bowl (SST) (Flange Top Bowl) (Pkg.) (Incls. Items 31 thru 34).....	1
30	00-438104-4	Extension – 60 Qt. Bowl (SST) (Flange Top Bowl) (Pkg.) (Incls. Items 31 thru 34).....	1
31	RP-2-35	Roll Pin <sup>3</sup> / <sub>16</sub> Dia. x <sup>5</sup> / <sub>8</sub> Lg. (For Items 29 & 30) .....	2
32	RP-3-22	Roll Pin <sup>3</sup> / <sub>16</sub> Dia. x 1 <sup>1</sup> / <sub>2</sub> Lg. (For Items 29 & 30) .....	2
33	00-437636	Spring – Bowl Clamp (80 or 60 Qt.) (Flange Top Bowl) (For Items 29 & 30) .....	2
34	00-437586	Handle – Clamp (80 or 60 Qt.) (For Items 29 & 30) .....	2
35	00-438083	Splash Cover Assy. – (100 & 80 Qt.) (Pkg.) .....	1
36	00-438082	Splash Cover Assy. – (60 Qt.) (Pkg.) .....	1
37	00-438081	Splash Cover Assy. – (40 Qt.) (Pkg.) .....	1
38	00-438080	Splash Cover Assy. – (30 Qt.) (Pkg.) .....	1



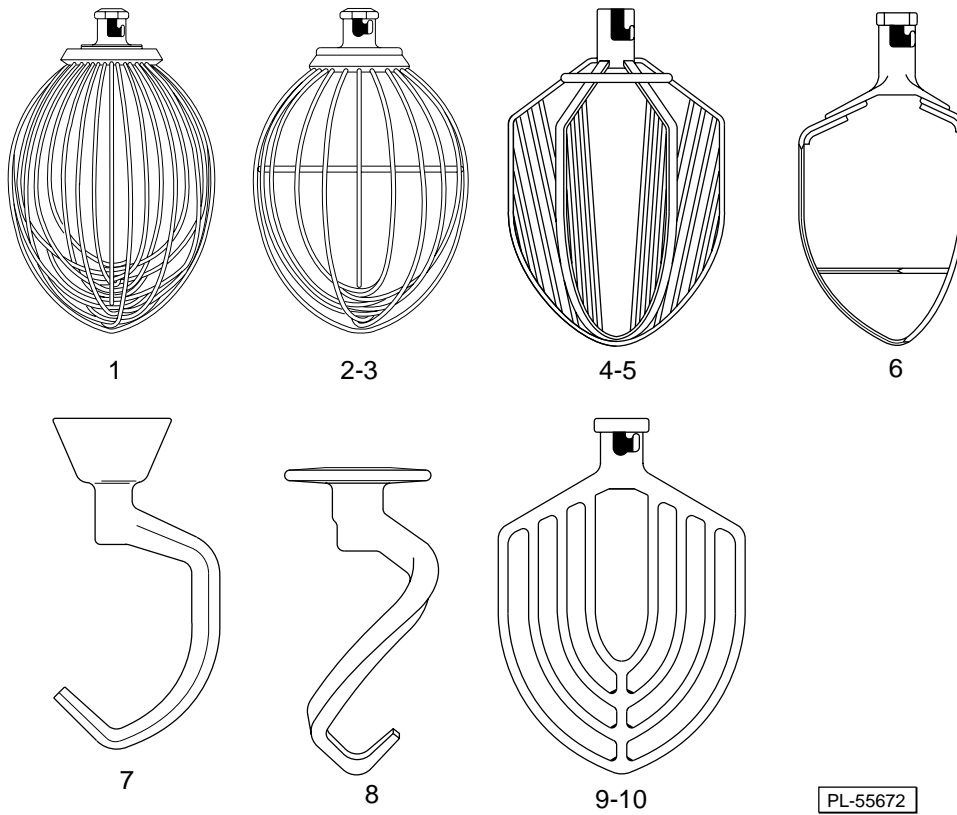
**BOWL AND EQUIPMENT  
(V1401 SERIES)**



**BOWL AND EQUIPMENT  
(V1401 SERIES)**

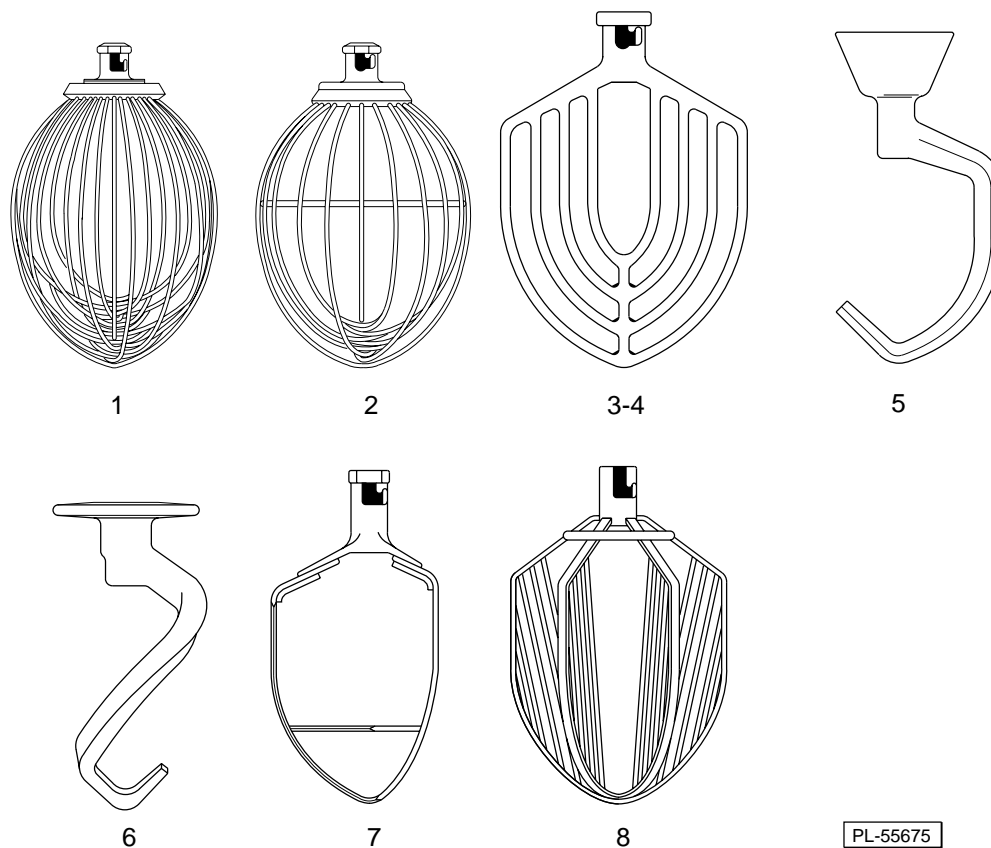
ILLUS. PL-55673	PART NO.	NAME OF PART	AMT.
1	8101-1	Knob – Clamp Stud (Tinned) .....	2
2	22196	Bolt – Bowl Lock .....	2
3	WL-4-11	Lockwasher 1/2 Medium .....	2
4	65532-1	Clamp – Bowl Adapter (Painted) .....	2
5	SC-36-40	Cap Screw 5/16-18 x 1 1/4 Hex Hd. ....	2
6	WL-3-47	Lockwasher 5/16 Medium .....	2
7	21020	Retainer – Bowl .....	1
8	65792	Adapter (140 to 80 Qt.) .....	1
9	62110	Stud – Bowl Locating .....	2
10	WL-4-4	Lockwasher 3/8 Light .....	2
11	NS-13-25	Nut 3/8-16 Hex .....	2
12	62111	80 Qt. Bowl Adapter Assy. (Pkg.) (Incls. Items 1 thru 11) .....	1
13	22196	Bolt – Bowl Lock .....	2
14	WL-4-11	Lockwasher 1/2 Medium .....	2
15	65791-1	Adapter (80-60 Qt.) (Painted) .....	1
16	SC-37-88	Cap Screw 5/16-18 x 1 1/4 Hex Hd. ....	2
17	WL-3-47	Lockwasher 5/16 Medium .....	2
18	24289	Retainer – Bowl .....	1
19	65532-1	Clamp – Bowl Adapter (Painted) .....	2
20	8101-1	Knob – Clamp Stud (Tinned) .....	2
21	24300	Pin – Bowl Locating .....	2
22	61033-1	60 Qt. Adapter Assy. Unit (Pkg.) (Incls. Items 13 thru 21) .....	1
23	7629-2	Stud – Bowl Locating .....	2
24	WL-4-17	Lockwasher 5/8 Light .....	2
25	SC-62-37	Cap Screw 1/2-13 x 1 Hex Hd. ....	1
26	WL-4-11	Lockwasher 1/2 Medium .....	1
27	7624-1	Retainer – Bowl .....	1
28	111671	Shim (0.010 Thk.) .....	AR
29	8100-1	Stud – Clamp .....	2
30	111165-1	Adapter (80-40 Qt. & 80-30 Qt.) (Painted) .....	1
31	111268-1	Knob – Clamp Stud (Painted) .....	2
32	24653-1	Bowl Adapter Assy. Unit (40 Qt.) (Pkg.) (Incls. Items 23 thru 31) .....	1
33	275692	Bowl – 140 Qt. (Pkg.) .....	1
34	295651	Bowl – 140 Qt. (SST) (Pkg.) .....	1
35	275689	Bowl – 80 Qt. (Tinned) (Pkg.) .....	1
36	275690	Bowl – 80 Qt. (SST) (Pkg.) .....	1
37	275687	Bowl – 60 Qt. (Tinned) (Pkg.) .....	1
38	275688	Bowl – 60 Qt. (SST) (Pkg.) .....	1
39	295650	Bowl – 40 Qt. (Tinned) (Pkg.) .....	1
40	275686	Bowl – 40 Qt. (SST) (Pkg.) .....	1
41	275684	Bowl – 30 Qt. (Tinned) (Pkg.) .....	1
42	295648	Bowl – 30 Qt. (SST) (Pkg.) .....	1
43	00-438104-2	Extension Assy. (SST) (100 & 80 Qt. Flanged Top Bowl) (Pkg.) (Incls. Items 45 thru 48) .....	1
44	00-438104-4	Extension Assy. (SST) (60 Qt. Flanged Top Bowl) (Pkg.) (Incls. Items 45 thru 48) .....	1
45	RP-2-35	Roll Pin 3/16 Dia. x 5/8 Lg. ....	2
46	00-437636	Spring – Clamp (Flange Top Bowl) .....	2
47	RP-3-22	Roll Pin 3/16 Dia. x 1 1/2 Lg. ....	2
48	00-437586	Handle – Clamp .....	2
49	00-438084	Splash Cover Assy. (140 Qt.) (Pkg.) .....	1
50	00-438083	Splash Cover Assy. (100 & 80 Qt.) (Pkg.) .....	1
51	00-438082	Splash Cover Assy. (60 Qt.) (Pkg.) .....	1
52	00-438081	Splash Cover Assy. (40 Qt.) (Pkg.) .....	1
53	00-438080	Splash Cover Assy. (30 Qt.) (Pkg.) .....	1

**MODELS M802 & V1401 SERIES MIXERS REPLACEMENT PARTS**



**AGITATORS  
(M802 SERIES)**

ILLUS. PL-55672	PART NO.	PART NO.	PART NO.	PART NO.	NAME OF PART	AMT.
1	295149	295154	295157	00-439740	"D" Wire Whip (SST) (Pkg.)	1
2	---	--	295158	00-295162	"I" Wire Whip (SST) (Pkg.)	1
3	295150	295155	---	---	"I" Wire Whip (SST) (Pkg.)	1
4	295151	295156	295159	---	"C" Six Wing Whip (Tinned) (Pkg.)	1
5	---	---	---	295160	"C" Four Wing Whip (Tinned) (Pkg.)	1
6	275836	275865	275449	275972	"P" Pastry Knife (Tinned) (Pkg.)	1
7	---	295175	295176	275458	"E" Dough Arm (Alum.) (Pkg.)	1
8	00-437701	295174	---	---	"ED" Dough Arm (Spiral) (Alum.) (Pkg.)	1
9	295041	275886	295033	295034	"B" Flat Beater (SST) (Pkg.)	1
10	275448	275885	275447	275809	"B" Flat Beater (Alum.) (Pkg.)	1



**AGITATORS  
(V1401 SERIES)**

ILLUS. PL-55675	PART NO. 140 Qt.	PART NO. 80 Qt.	PART NO. 60 Qt.	PART NO. 40 Qt.	NAME OF PART	AMT.
1	295143	295149	295154	295157	"D" Wire Whip (SST) (Pkg.)	1
2	295144	295150	295155	295158	"I" Wire Whip (SST) (Pkg.)	1
3	275883	275448	275885	275447	"B" Flat Beater (Alum.) (Pkg.)	1
4	275884	295041	275886	295033	"B" Flat Beater (SST) (Pkg.)	1
5	---	---	295175	295176	"E" Dough Arm (Alum.) (Pkg.)	1
6	295131	00-437701	295174	---	"ED" Dough Arm (Alum.) (Pkg.)	1
7	295169	275836	275865	275449	"P" Pastry Knife (Tinned) (Pkg.)	1
8	295145	295151	295156	295159	"C" Six Wing Whip (Tinned) (Pkg.)	1

