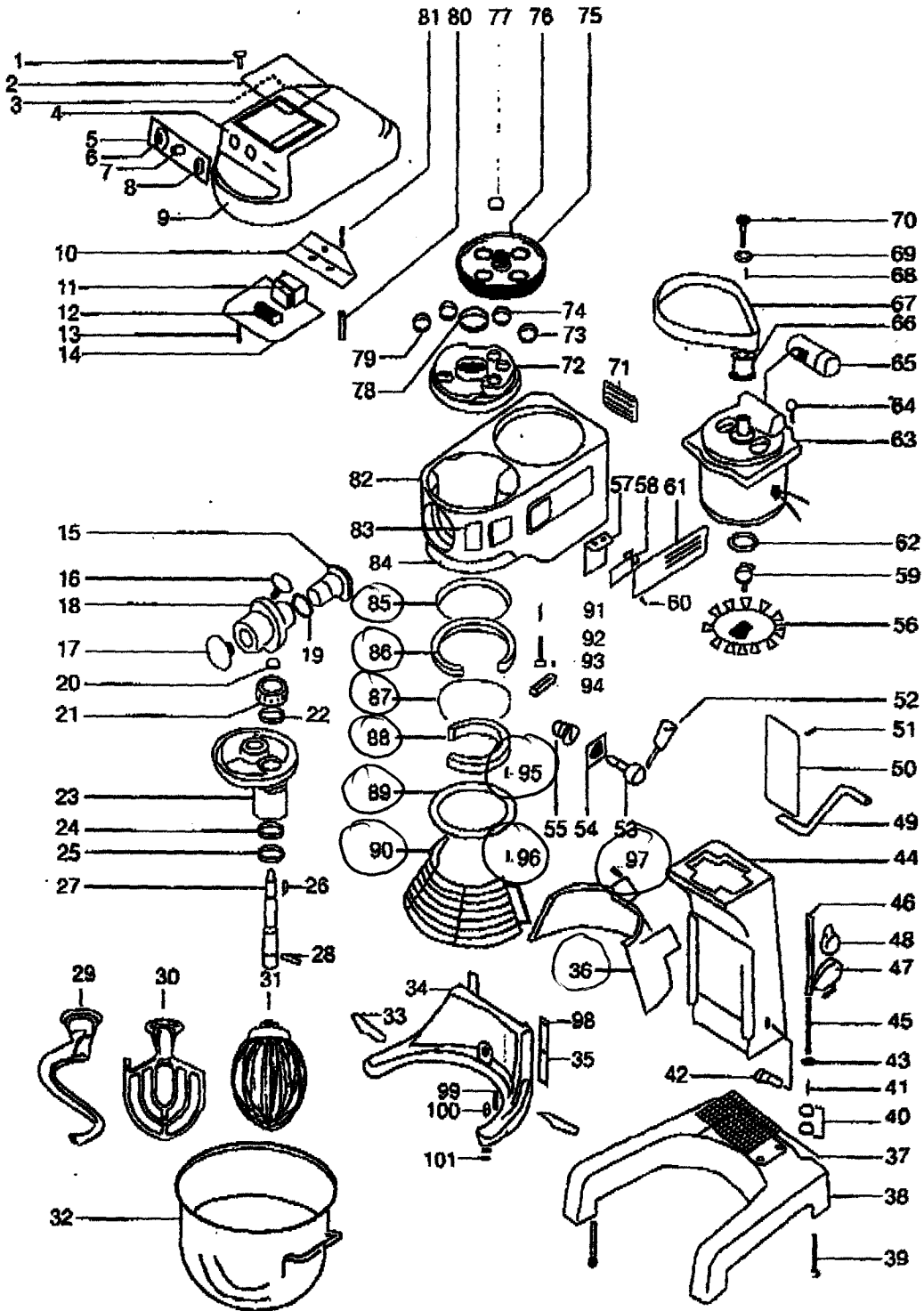
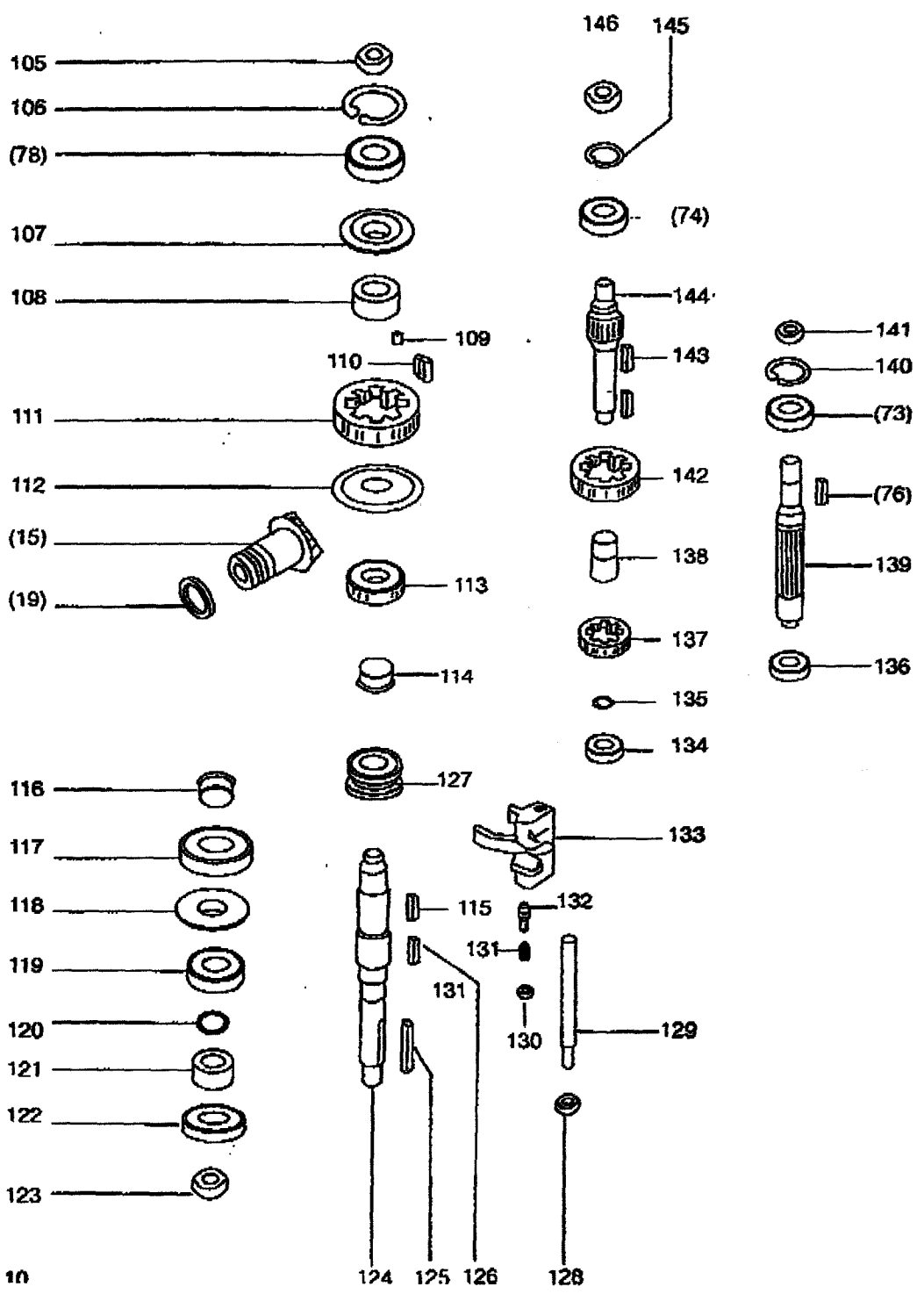


Main Body Assembly - SP22HI PLANETARY MIXER





Item	Qty	Description			
			51	6	Screws ((M6x1)
			52	1	Gear shift lever
			53	1	Gear shift hub
1	4	Screws (M5x0.8)	54	1	Gear shift cover
2	1	Switch Box Cover	55	1	Gear shift mechanism
3	1	Gasket	56	1	Cooling fan
4	1	Transmission cover	57	1	Bracket
5	1	Fascia panel	58	1	Microswitch
6	1	Red emergency stop button	59	1	Clutch
7	1	Green start button	60	6	Screws (M6x1)
8	1	Timer	61	1	Instructions for use plate
9	1	Decal	62	1	Platinum switch
10	1	Mounting Bracket	63	1	Motor
11	1	Contacto	64	4	Screws (M6x1)
12	13	Connecting blocks	65	1	Capacitor
13	2	Screws (M6 x 1)	66	1	Drive wheel (15T)
14	2	Support tube	67	1	Belt (259L)
15	1	Level drive gear (35T)	68	1	Level key (5x5x25)
16	1	Thumbscrew	69	1	Washer
17	1	Attachment drive plug	70	1	Screw (M6x1)
18	1	Attachment hub	71	1	Ventilation plate
19	1	Thrust washer	72	1	Top plate
20	1	Stop nut (M12x1.25)	73	1	Bearing (#6003Z)
21	1	Pinion (19T)	74	1	Bearing (#6003Z)
22	1	Bearing (#6203Z)	75	1	Transmission belt pulley
23	1	Planetary	76	1	Woodruff key (5x5x27)
24	1	Bearing (#6204Z)	77	1	Stop nut (M16x1.5)
25	1	Oil seal (TC 25x47x10)	78	1	Bearing (6205Z)
26	1	Woodruff key (5x5x20)	79	2	Oil plug
27	1	Planetary shaft	80	2	Support tube
28	1	Pin	81	2	Screws (M6x1)
29	1	Dough hook	82	1	Transmission case
30	1	Beater	83	1	Decal
31	1	Whisk	84	1	Decal
32	1	Bowl (25 Litre)	85	1	Jacket
33	2	Bowl latches	86	1	Slide sheath
34	1	Bowl cradle	87	1	Mat
35	2	Guide rails	88	1	Internal planetary gear (63T)
36	1	Solid bowl cover	89	1	Spacer
37	1	Anti splash grid	90	1	Front guard grill
38	1	Base	91	1	Spring
39	4	Bolts (M10x70mm)	92	1	Touch shaft
40	2	Lock nuts	93	2	Screws (M4x0.7)
41	1	Spring	94	1	Touch mass
42	1	Circuit breaker	95	6	Screw (M6x1)
43	2	Washer	96	6	Screw (M5x0.8)
44	1	Centre column	97	4	Screw (M6x1)
45	1	Spring pin (3mm)	98	6	Screw (M6x1)
46	1	Bowl lift rod	99	2	Screw (M6x1.5)
47	1	Microswitch	100	2	Dowel screw
48	1	Bowl lift mechanism	101	8	Stop nut (M6x1)
49	1	Bowl lift arm			
50	1	Rack plate			

102
103
104
105	1	Stop nut (M18x1.5)
106	1	C-Ring (STW52)
107	1	Lead-in-oil pad
108	1	Bush
109	8	Pillar
110	8	Spring slice
111	1	Low speed gear (46T)
112	1	Bevel gear (46T)
113	1	Clutch gear (28T)
114	1	CLutch bushi
115	1	Woodruff key (6x6x27)
116	1	Clutch bush
117	1	Clutch gear (38T)
118	1	Heel
119	1	Bearing (#6205Z)
120	1	Oil ring (28x22x3)
121	1	Oil guard bush
122	1	Oil seal (tc 35x52x10)
123	1	Stop nut ((M18x1.5)
124	1	Drive shaft
125	1	Woodruff key (6x6x45)
126	1	Woodruff key (5x5x27)
127	1	Clutch sleeve
128	2	Stop nut
129	1	Rod - shifter guide
130	2	Retainer pring - shifter yoke
131	2	Spring - shifter yoke
132	2	Plunger - shifter yoke
133	1	Yoke - shifter
134	1	Bearing (#6202)
135	1	Circlip (STW-19)
136	1	Bearing (#6202)
137	1	Gear (24T)
138	1	Bush spacer
139	1	Master shaft
140	1	Circlip (35)
141	1	Stop nut (M16x1.5)
142	1	Gear (34T)
143	1	Woodruff key (5x5x10)
144	2	Transmission shaft (16T)
145	1	Circlip (STW-35)
146	1	Stop nut (M16x1.5)